

Agilent Technologies U3042AE12

User's Guide

**Use this manual with the following documents:
PNA Series Network Analyzer On-line Help System and
Application Note 1408-12**



Agilent Technologies

Manufacturing Part Number: U3042-90001

Printed in USA: March 2009

Supersede April 2008

© Copyright 2007- 2009 Agilent Technologies, Inc. All rights reserved.

Warranty Statement

THE MATERIAL CONTAINED IN THIS DOCUMENT IS PROVIDED “AS IS,” AND IS SUBJECT TO BEING CHANGED, WITHOUT NOTICE, IN FUTURE EDITIONS. FURTHER, TO THE MAXIMUM EXTENT PERMITTED BY APPLICABLE LAW, AGILENT DISCLAIMS ALL WARRANTIES, EITHER EXPRESS OR IMPLIED WITH REGARD TO THIS MANUAL AND ANY INFORMATION CONTAINED HEREIN, INCLUDING BUT NOT LIMITED TO THE IMPLIED WARRANTIES OF MERCHANTABILITY AND FITNESS FOR A PARTICULAR PURPOSE. AGILENT SHALL NOT BE LIABLE FOR ERRORS OR FOR INCIDENTAL OR CONSEQUENTIAL DAMAGES IN CONNECTION WITH THE FURNISHING, USE, OR PERFORMANCE OF THIS DOCUMENT OR ANY INFORMATION CONTAINED HEREIN. SHOULD AGILENT AND THE USER HAVE A SEPARATE WRITTEN AGREEMENT WITH WARRANTY TERMS COVERING THE MATERIAL IN THIS DOCUMENT THAT CONFLICT WITH THESE TERMS, THE WARRANTY TERMS IN THE SEPARATE AGREEMENT WILL CONTROL.

DFARS/Restricted Rights Notice

If software is for use in the performance of a U.S. Government prime contract or subcontract, Software is delivered and licensed as “Commercial computer software” as defined in DFAR 252.227-7014 (June 1995), or as a “commercial item” as defined in FAR 2.101(a) or as “Restricted computer software” as defined in FAR 52.227-19 (June 1987) or any equivalent agency regulation or contract clause. Use, duplication or disclosure of Software is subject to Agilent Technologies’ standard commercial license terms, and non-DOD Departments and Agencies of the U.S. Government will receive no greater than Restricted Rights as defined in FAR 52.227-19(c)(1-2) (June 1987). U.S. Government users will receive no greater than Limited Rights as defined in FAR 52.227-14 (June 1987) or DFAR 252.227-7015 (b)(2) (November 1995), as applicable in any technical data.

Safety Notes

The following safety notes are used throughout this document. Familiarize yourself with each of these notes and its meaning before performing any of the procedures in this document.

WARNING **Warning denotes a hazard. It calls attention to a procedure which, if not correctly performed or adhered to, could result in injury or loss of life. Do not proceed beyond a warning note until the indicated conditions are fully understood and met.**

CAUTION Caution denotes a hazard. It calls attention to a procedure that, if not correctly performed or adhered to, could result in damage to or destruction of the instrument. Do not proceed beyond a caution sign until the indicated conditions are fully understood and met.

Statement of Compliance

This product has been designed and tested in accordance with the standards listed on the Manufacturer's Declaration of Conformity, and has been supplied in a safe condition. The documentation contains information and warnings that must be followed by the user to ensure safe operation and to maintain the product in a safe condition.

Definitions

- *Specifications* describe the performance of parameters covered by the product warranty (temperature –0 to 55 °C, unless otherwise noted.)
- *Typical* describes additional product performance information that is not covered by the product warranty. It is performance beyond specification that 80% of the units exhibit with a 95% confidence level over the temperature range 20 to 30 °C. Typical performance does not include measurement uncertainty.
- *Nominal* values indicate expected performance or describe product performance that is useful in the application of the product, but is not covered by the product warranty.
- *Characteristic Performance* describes performance parameter that the product is expected to meet before it leaves the factory, but is not verified in the field and is not covered by the product warranty. A characteristic includes the same guard bands as a specification.

Contents

U3042AE12

Introduction	2
Description	3
Network Analyzer Requirement.	3
Available Options	4
Test Set Options	4
Accessory Options	4
Cable Options	4
Verifying the Shipment	5
General Specifications	6
Power Requirements	6
Environmental Requirements	7
Environmental Tests	7
Equipment Heating and Cooling	7
Required Conditions for Accuracy Enhanced Measurement	7
Dimensions and Space Requirements	8
Frequency Range and Maximum Power Levels	9
Typical Reflection Tracking	10
Front and Rear Panel Features	11
Active LED	11
Test Port LEDs	11
Test Ports – 3.5 mm Bulkhead (male)	11
Access Ports – 3.5 mm (female)	11
Line Switch	12
Control Lines and Voltage Adjust	12
Test Set Interface	12
Pass Through Interface	12
Line Module	12
Available Fuses	13
System Setup with N5230A/C	14
Preparing the N5230A/C Network Analyzer	14
N5230A/C RF Interface Cable Connections	16
Controlling the Test Set with N5230A	17
Installing New Firmware	18
N5230A Multipoint Mode for Option 551	20
How to Access Multipoint Mode	21
External Test Set Control Feature	22
Trace Measure S-Parameter	23
New Trace Measure S-Parameter	23
N-Port Calibration with N5230A	26
N5230A Interface Control	28
Overview of the Interface Control	28
How to Access Interface Control Settings with N5230A	29
Test Set I/O Address and Data using Control Interface with N5230A	30
N5230A GPIB Control	32
Overview of the GPIB Control	32
How to Access GPIB Command Processor with N5230A	33
GPIB Command Processor Console	34

Contents

System Setup with N5242A	35
Preparing the N5242A Network Analyzer	35
N5242A RF Interface Cable Connections	38
Controlling the Test Set with N5242A or N5230C	40
PNA Multiport Mode for Option 551	40
How to Access Multiport Mode	41
External Test Set Control Feature.	42
Trace Measure S-Parameter	44
New Trace Measure S-Parameter	44
N-Port Calibration with N5242A or N5230C	47
N5242A or N5230C Interface Control.	49
Overview of the Interface Control	49
How to Access Interface Control Settings	50
Test Set I/O Address and Data using Control Interface with N5242A or N5230C.	51
N5242A or N5230C GPIB Control.	53
Overview of the GPIB Control	53
How to Access GPIB Command Processor	54
GPIB Command Processor Console.	55
DUT Control Lines	56
Setting the DUT Control Interface	56
Setting the Variable Source Voltage	58
Connecting to the DUT Control Lines.	58
Using an External Power Supply	59
Test Set I/O Interface Commands.	61
Switch Address and Data.	61
Operational Check.	66
Verification Limits	66
Equipment Required	67
Operational Check Procedure	68
Preparing the N5230A	68
N5230A 1-Port Calibration and Verification Procedure	70
Preparing the N5242A or N5230C.	74
N5242A or N5230C 1-Port Calibration and Verification Procedure	75
Troubleshooting Operational Check Failures	80
Interconnect Cable Verification.	80
Service Information	81
Replaceable Parts	81
Theory of Operation	83
RF Switch Components	83
S100 - Source to Ports (1, 5, 9 and 13).	83
S200 - Source to Ports (2, 6, 10 and 14).	83
S300 - Source to Ports (3, 7, 11 and 15).	83
S400 - Source to Ports (4, 8, 12 and 16).	83
S101 - Receiver to Ports (1, 5, 9 and 13)	83
S201 - Receiver to Ports (2, 6, 10 and 14)	83
S301 - Receiver to Ports (3, 7, 11 and 15)	84
S401 - Receiver to Ports (4, 8, 12 and 16)	84
RF Coupler Components	84
System Block Diagram	85

Contents

Safety and Regulatory Information.....	88
Introduction.....	88
Before Applying Power.....	88
Connector Care and Cleaning.....	88
Declaration of Conformity.....	88
Shipping Instructions.....	88
Compliance with German Noise Requirements.....	89
EMC Information.....	89
Safety Information.....	89
Warnings.....	90
Cautions.....	91
Instrument Markings.....	92
Electrostatic Discharge Protection.....	93
Contacting Agilent.....	94

Contents

U3042AE12

Introduction

This document describes how to use the U3042AE12 Multiport Test Set with the Agilent N5230A/C 4-Port PNA-L Network Analyzer and the N5242A PNA-X for a 16-Port network analyzer solution.

Figure 1 N5230A/C 4-Port PNA-L with U3042AE12

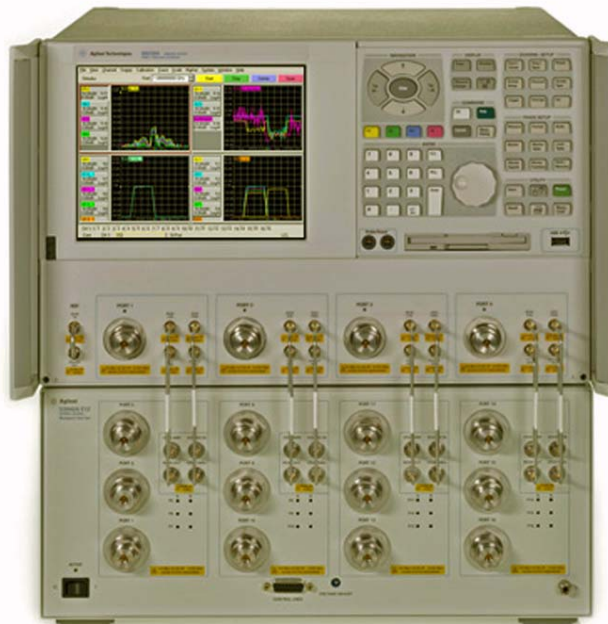


Figure 2 N5242A 4-Port PNA-X with U3042AE12



Description

The Agilent U3042AE12 Multiport Test Set is a 12-Port solid-state extension test set. When combined with a 4-Port N5230A/C PNA-L or N5242A PNA-X Network Analyzer, the U3042AE12 provides a complete solution for 16-Port full crossbar measurements.

The test set is directly controlled by the network analyzer, no external personal computer or software is required.

The N5230A/C PNA-L and N5242A PNA-X Network Analyzer's will be referred to throughout this document as the PNA-L and the PNA-X. PNA refers to both PNA-L or PNA-X.

Network Analyzer Requirement

- The Network Analyzer requires Option 551 (N-Port error correction and measurement capability).
- The N5230A/C PNA-L requires Option 245, 145, 246 or 146 to provide the test set interface connections and requires test set file u3042ae12_p4.tsx
- The N5242A PNA-X requires Option 400 to provide the test set interface connections and requires test set file u3042ae12_pnax_p4.tsx.

More PNA information is available on the following websites:

- Documentation - <http://www.agilent.com/find/pna>
- Network Analyzer Firmware - <http://na.tm.agilent.com/pna/firmware/firmware.htm>
Refer to “[Installing New Firmware](#)” on page 18.
- U3042AE12 Test Set Files - <http://na.tm.agilent.com/multiport>. (see test set files link)

Available Options

Test Set Options

The U3042AE12 has three available test set options:

Refer to “[System Block Diagram](#)” beginning on [page 85](#).

- Standard - solid state switches for fast switch speed and improved switch life. (No Option 001 or 002 on the serial tag).
- Option 001 solid state switches with amplifiers to improve dynamic range.
- Option 002 solid state switches with amplifiers and bias-tees for each port.

NOTE The Options 700, 001, and 002 limit the frequency range due to blocking capacitors in the switches and amplifier performance. Solid state switches degrade frequencies below 2 MHz, and 001 or 002 amplifiers degrade performance above 18 GHz.

Accessory Options

Installation instructions are included in the option package.

- Option 1CM - Rackmount Kit (5063-9215).
- Option 1CN - Front Handle Kit (5063-9228).
- Option 1CP - Rackmount with front handle Kit (5063-9222).

Cable Options

The U3042AE12 has available cable options:

- Option 016 provides the interface cable set and hardware to connect the test set to the PNA-L.
- Option 042 provides the interface cable set and hardware to connect the U3042AE12 to the PNA-X.

Verifying the Shipment

Inspect the shipping container. If the container or packing material is damaged, it should be kept until the contents of the shipment have been checked mechanically and electrically. If there is physical damage refer to [“Contacting Agilent” on page 94](#). Keep the damaged shipping materials (if any) for inspection by the carrier and an Agilent Technologies representative. [Table 1](#) contains the accessories shipped with your U3042AE12.

Table 1 Content List

Agilent Part Number	Description	Qty
Common to the following Options		
9320-6636	Functional Test Certificate	1
9320-0333	Envelope-Cal Certificate	1
5023-0132	Locking Feet	1
8120-6818	Test Set I/O Cable	1
U3042-90001	User’s Guide	1
Option 016 (Cable-set for PNA-L)		
Z5623-20418	RF Cable Semi-rigid	8
Z5623-20419	RF Cable Semi-rigid	8
Option 042 (Cable-set for PNA-X)		
U3042-20031	RF Cable Semi-rigid	1
U3042-20032	RF Cable Semi-rigid	1
U3042-20029	RF Cable Semi-rigid	1
U3042-20030	RF Cable Semi-rigid	1
U3042-20035	RF Cable Semi-rigid	1
U3042-20033	RF Cable Semi-rigid	1
U3042-20034	RF Cable Semi-rigid	1
U3042-20036	RF Cable Semi-rigid	1
U3042-20037	RF Cable Semi-rigid	1
U3042-20038	RF Cable Semi-rigid	1
U3042-20039	RF Cable Semi-rigid	1
U3042-20040	RF Cable Semi-rigid	1
U3042-20041	RF Cable Semi-rigid	1
U3042-20043	RF Cable Semi-rigid	1
U3042-20044	RF Cable Semi-rigid	1
0515-2317	Screw	2
N5242-20138	Rear Lock Feet (right)	1
N5242-20139	Rear Lock Feet (left)	1

General Specifications

Specifications for the U3042AE12 Multiport Test Set are characteristic for the System performance of the PNA and Test Set. Actual performance of the system is based on the customers PNA and options that are used with the test set. A functional certificate is only offered for the U3042AE12.

NOTE When connected to a PNA, this test set will degrade the performance at the test ports. The internal switch paths reduce test port power and power to the receivers. This affects the test port power of the PNA and also reduces dynamic range. The reflection tracking values measured in the “[Operational Check](#)” on page 66 can be subtracted from the analyzers dynamic range to determine the approximate performance of the system.

Power Requirements

Verify that the required ac power is available before installing the Test Set to the PNA.

- Air conditioning equipment (or other motor-operated equipment) should not be placed on the same ac line that powers the Test Set and PNA.
- [Table 2](#) contains the maximum wattage for all instruments. This table can be use to determine the electrical and cooling requirements.

NOTE Values are based on 120 Vac supplied to each instrument at 60 Hz.

Table 2 Power Requirements

Standard Equipment	
Instrument	Maximum Wattage
N5242A	270
N5230A/C	350
U3042AE12	350

WARNING This is a Safety Class I product (provided with a protective earthing ground incorporated in the power cord). The mains plug shall be inserted only into a socket outlet provided with a protective earth contact. Any interruption of the protective conductor, inside or outside the instrument, is likely to make the instrument dangerous. Intentional interruption is prohibited.

Environmental Requirements

The environmental requirements of the PNA are listed in [Table 3](#). Note that these requirements are the same as those of the N5230A/C PNA-L. The N5230A/C PNA-L provides front panel access to the source outputs, receiver inputs and couplers for use with the Multiport test sets.

CAUTION Ventilation Requirements: When installing the instrument in a cabinet, the convection into and out of the instrument must not be restricted. The ambient temperature (outside the cabinet) must be less than the maximum operating temperature of the instrument by 4 °C for every 100 watts dissipated in the cabinet. If the total power dissipated in the cabinet is greater than 800 watts, forced convection must be used.

Table 3 PNA Operating Environment

Temperature	
Operation	0 °C to 40 °C (32 °F to 104 °F)
Storage	–40 °C to +70 °C (–40 °F to +158 °F)
Measurement/Calibration	20 °C to 26 °C (68 °F to 79 °F)
Performance Verification	Temperature must be within 1 °C (1.8 °F) of the temperature at which the measurement calibration was performed.
Pressure Altitude (Operation or Storage)	0 to 4600 meters (~ 15,000 feet)
Enclosure Protection	IP 2 0

Environmental Tests

The U3042AE12 complies with all applicable safety and regulatory requirements for the intended location of use and have been evaluated to assure that they are consistent with Agilent quality and reliability goals. On the basis of that evaluation, the following environmental tests have been deemed unnecessary and have not been performed: temperature, humidity, shock, vibration, altitude and power line conditions.

Equipment Heating and Cooling

If necessary, install air conditioning and heating to maintain the ambient temperature within the appropriate range. Air conditioning capacity must be consistent with the BTU ratings given in [Table 2](#).

Required Conditions for Accuracy Enhanced Measurement

Accuracy-enhanced (error-corrected) measurements require the ambient temperature of the PNA and Test Set to be maintained within ± 1 °C of the ambient temperature at calibration.

Dimensions and Space Requirements

Standard installation of the U3042AE12 and PNA includes configuration and installation on a customer provided lab bench or table top of adequate size and strength.

Table 4 System Dimensions

Item	Weight
Required Bench Top Dimension:	
Clearance above the bench	43 cm (17 in)
Width	127 cm (50 in)
Depth	102 cm (40 in)
Weight	55 kg (110 lb)

Table 5 Instrument Dimensions

Model	Weight	Height	Width	Depth
N5242A	37 kg (82 lb, ±0.5 lb)	26.67 cm (10.5 in)	42.5 cm (16.57 in)	55.8 cm (21.97 in)
N5230A/C	29.7 kg (65.5 lb, ±0.5 lb)	27.9 cm (11 in)	48.3 cm (19 in)	50 cm (19.7 in)
U3042AE12	11.4 kg (25 lb)	19.1 cm (7.5 in)	42.5 cm (16.7 in)	43.2 cm (17 in)

Frequency Range and Maximum Power Levels

Table 6 Usable Frequency Range

Model	Standard	001 or 002
N5230A/C(PNA-L)	10 MHz to 20 GHz	10 MHz to 20 GHz
N5242A(PNA-X)	10 MHz to 26.5 GHz	10 MHz to 26.5 GHz (significantly degraded performance above 20 GHz)

CAUTION It is recommend that you do not operate components near damage levels (+30 dBm). The power levels must be 3 dB below maximum level to ensure no damage. See [Table 7](#).

Table 7 Power Levels

Maximum U3042AE12 Test Port RF Power Levels:	
PORT 5-16	+27 dBm 0 Vdc
Maximum U3042AE12 Access Ports:	
SOURCE OUT	+20 dBm 0 Vdc
CPLR ARM	+20 dbm 0 Vdc
CPLR THRU	+20 dBm 0 Vdc
RCVR OUT	+20 dBm 0 Vdc

NOTE Refer to your PNA specifications to determine the maximum input power levels for the PNA access and test ports, or to optimize the power levels in the receivers.

NOTE Damage and maximum levels are not necessarily the optimum level.

Typical Reflection Tracking

Specifications for the U3042AE12 Multiport Test Set are typical. System performance for the PNA and Test Set are only characteristic and intended as non warranted information. A functional certificate is provided for the U3042AE12 only.

NOTE Typical specifications are based on 1 to 2 units performance. Refer to [Table 8](#), [Table 24](#) and [Table 25 on page 67](#).

Table 8 Typical Reflection Tracking N5230A/C

Frequency	Standard 700	Option 001	Option 002
300 kHz to 10 MHz ¹	-80	-100	-100
10 MHz to 4 GHz	-2	+2	+1
4 GHz to 6 GHz	-7	+1	+0
6 GHz to 10.5 GHz	-8	-2	-3
10.5 GHz to 13.5 GHz	-13	-3	-4
13.5 GHz to 15 GHz	-15	-3	-4
15 GHz to 20 GHz	-20	-13	-15

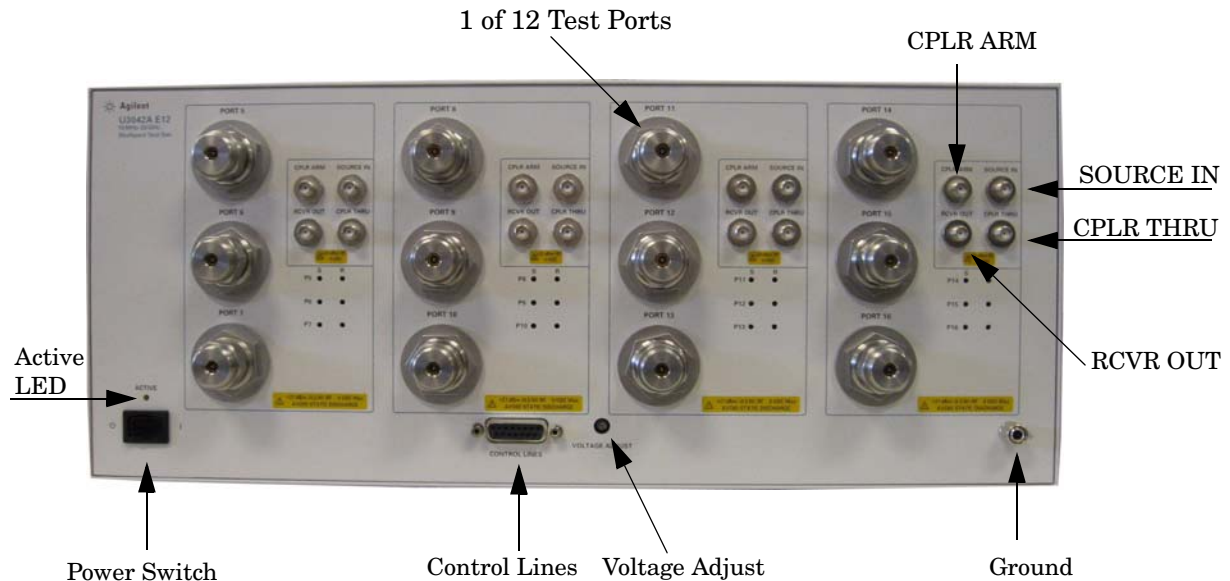
1. Generally improves at 3 MHz to -6 dBm.

Table 9 Typical Reflection Tracking N5242A

Frequency	Standard 700	Option 001	Option 002
10 MHz to 50 MHz	-2	+5	+4
50 MHz to 500 MHz	-3	+5	+4
500 MHz to 3.2 GHz	-8	+2	+1
3.2 GHz to 10 GHz	-12	-2	-3
10 GHz to 16 GHz	-15	-4	-5
16 GHz to 20 GHz	-20	-13	-15
20 GHz to 24 GHz	-24	-21	-23
24 GHz to 26.5 GHz	-25	-35	-37

Front and Rear Panel Features

Figure 3 Front Panel (Multiport Test Set)



Active LED

- When the test set is connected and addressed by a PNA, the LED is On (illuminated).
- The LED is Off (not illuminated) when the test set power switch is in Standby, or not addressed by a PNA.

Test Port LEDs

- An illuminated LED indicates an active port in Source or Receiver mode. On the front panel “S” indicates Source test ports and “R” indicates Receiver test ports.


Test Ports – 3.5 mm Bulkhead (male)

- Port 5–16

Access Ports – 3.5 mm (female)

- SOURCE OUT
- CPLR THRU
- CPLR ARM
- RCVR (A-D) IN

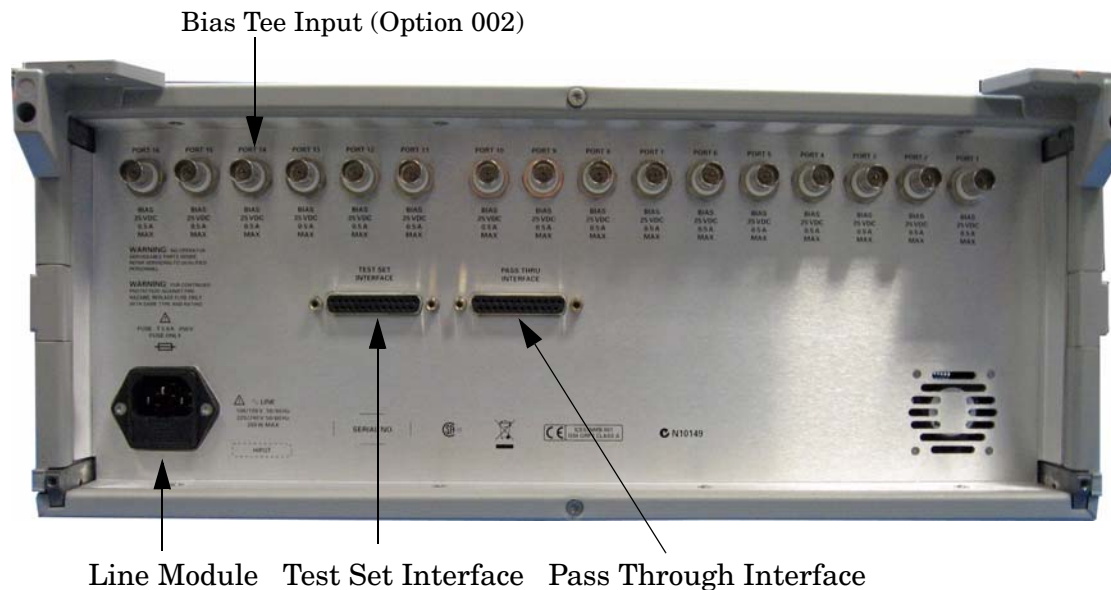
Line Switch

-  – Standby
- | – ON (Active LED On)

Control Lines and Voltage Adjust

For further information pertaining to control lines and voltage adjustments see “[DUT Control Lines](#)” on page 56.

Figure 4 Rear Panel (Multiport Test Set)



Test Set Interface

The Test Set Interface connector is used to send address and data to the test set from the PNA.

Pass Through Interface

Connection to another test set.

Line Module

The line fuse, as well as a spare, reside within the line module. [Figure 5](#) illustrates where the fuses are located and how to access them.

Available Fuses

- Fuse (F 5 A/250V, 2110-0709) U.L. listed and CSA certified

WARNING For continued protection against fire hazard replace line fuse only with same type and rating:

- Fuse 5A/250V, Part Number 2110-0709

The use of other fuses or material is prohibited.

Figure 5 Line Fuse



CAUTION This instrument has autoranging line voltage input; be sure the supply voltage is within the specified range.

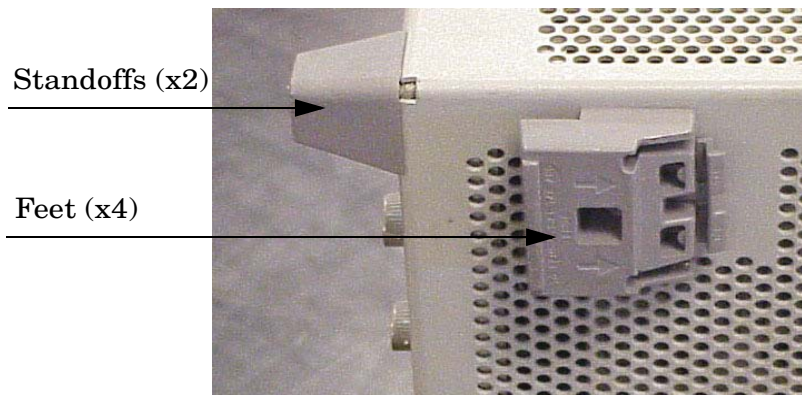
System Setup with N5230A/C

WARNING The opening of covers or removal of parts is likely to expose dangerous voltages. Disconnect the instrument from all voltage sources while it is being opened.

Preparing the N5230A/C Network Analyzer

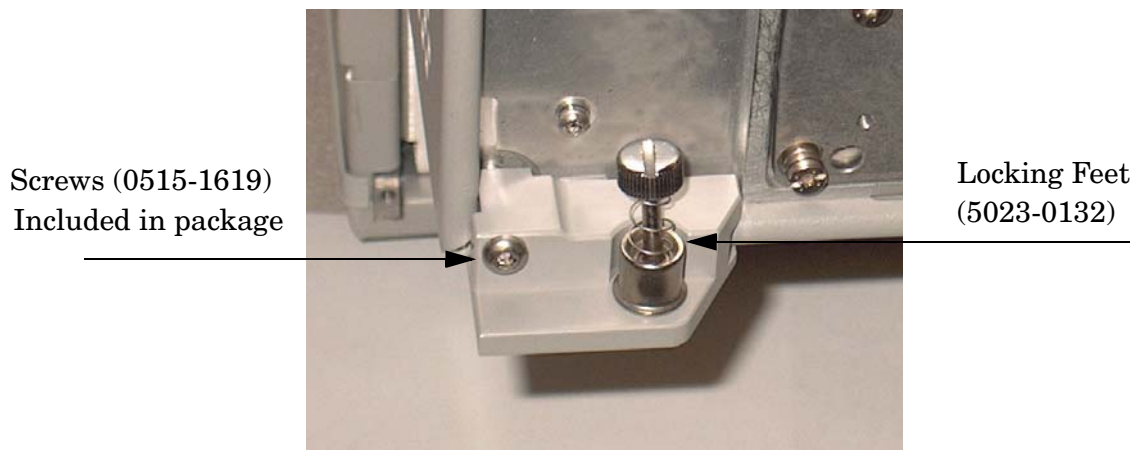
1. Remove the feet from the bottom of the network analyzer. Refer to [Figure 6](#).
2. Remove the 2 lower standoffs and screws (0515-1619) from the rear panel on the network analyzer.

Figure 6 Rear Bottom Feet



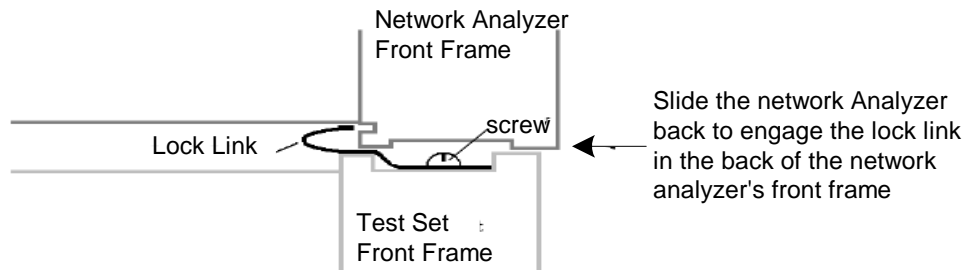
3. Install the two rear locking feet (5023-0132) onto the PNA-L, using the included screws (0515-1619), where the standoffs were removed. Refer to [Figure 7](#).

Figure 7 Install Locking Feet



- Place the network analyzer on top of the Test Set and ensure that the front frame of the network analyzer is positioned slightly forward of the locks that are attached to the Test Set. Slide the network analyzer back so the locks engage the front frame of the analyzer. Refer to [Figure 8](#).

Figure 8 Locking the Analyzer's



- Secure the network analyzer's lower locking feet to the Test Set upper locking feet, using the spring-loaded screws on the locking feet. Refer to [Figure 9](#). If the network analyzer's lower locking feet are not aligned with the screw holes in the Test Set's upper locking feet, loosen the screws securing the feet to the instrument slightly to align.

Figure 9 Locking Feet Screws



NOTE There are two Lock-Foot kits available. Refer to [“Contacting Agilent” on page 94](#) for ordering information.

- PNA – 5023-0132 (Kit includes locking feet and screws)
- Test Set – 5063-9253 (Kit includes lock links, locking feet and screws)

N5230A/C RF Interface Cable Connections

Figure 10 on page 16 illustrates the setup configuration of the U3042AE12 Multiport Test Set and how it should be configured to the PNA-L.

1. Connect the RF interconnect cables, supplied with this option, from the PNA-L to the Test Set. Torque each cable to 8 in-lb. Refer to Table 10 and Figure 10 on page 16. The Z5623-20418 are the short cables and the Z5623-20419 are the long cables.

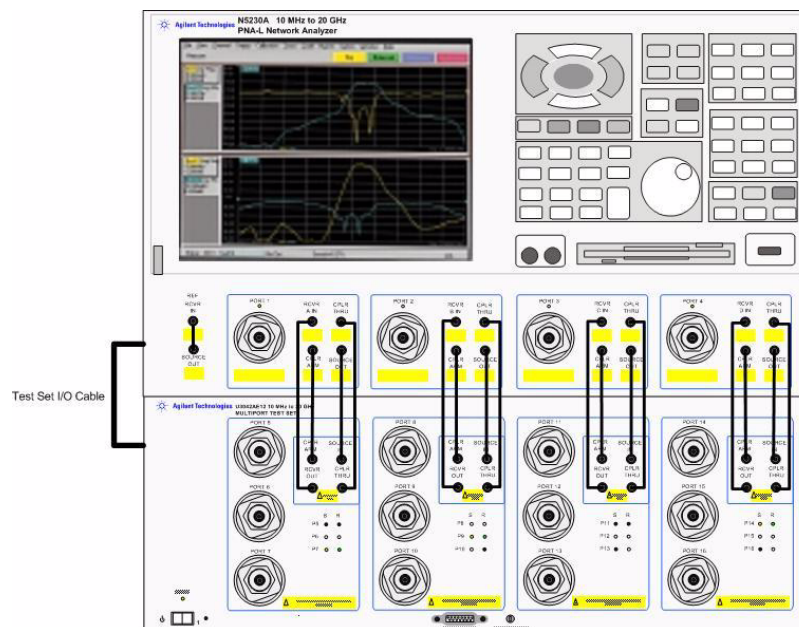
CAUTION Each end of the interconnect RF cables have a different length from the bend. When connecting the RF Interconnect cables be sure that the longer end from the bend is connected to the PNA.

CAUTION Over torque will cause damage to the test set and may cause connectors to spin or become loose.

Table 10 N5230A/C Interface Cable Connection (Option 016)

RF Cables	From PNA-L	To Test Set
Z5623-20418	SOURCE OUT	SOURCE OUT
Z5623-20418	CPLR ARM	CPLR ARM
Z5623-20419	CPLR THRU	CPLR THRU
Z5623-20419	RCVR IN	RCVR OUT

Figure 10 N5230A/C RF Interface Connections



2. Connect the PNA Test Set I/O cable (8120-6818) to the U3042AE12 Test Set Interface on the rear panel. Refer to Figure 30 on page 39.

Controlling the Test Set with N5230A

This section will describe how to setup and operate the U3042AE12 Multiport Test Set with the N5230A 4-Port PNA-L Network Analyzer.

The U3042AE12 Multiport Test Set is considered a “slave” instrument. A PNA-L must be used to control the Test Set. There are three methods to control the Test Set. Multiport mode is recommended due to calibration and ease of use.

- PNA Multiport Mode firmware revision \geq A.07.50.26 for the N5230A Option 551. From the PNA drop-down menu and select **Help > About Network Analyzer**.

The following test set file must be installed into network analyzer file directory:
c:\Program Files\Agilent\Network Analyzer\testsets

4-Port PNA-L requires test set: u3042ae12_p4.tsx

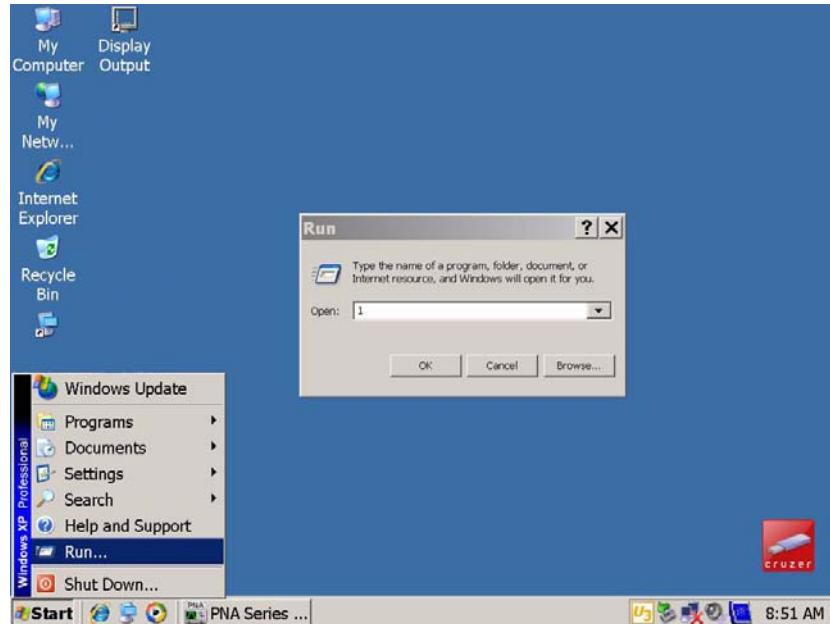
- PNA Interface Control
- PNA GPIB Command Processor

Visit our website for firmware revision and downloads.
<http://na.tm.agilent.com/pna/firmware/firmware.htm>

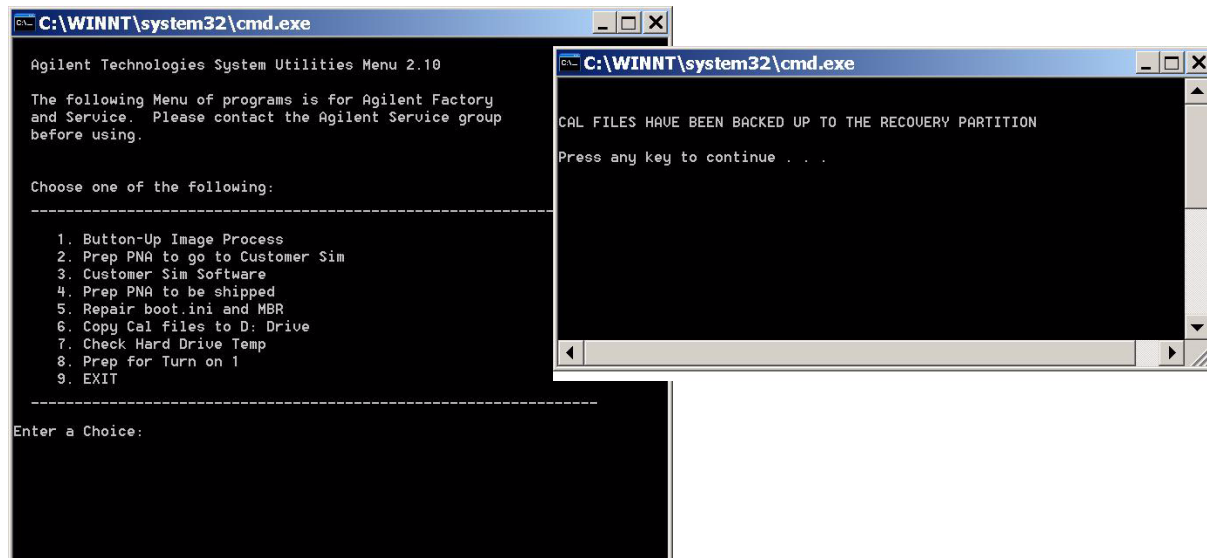
Installing New Firmware

Before installing new firmware into your PNA-L, you must store the mixer calibration files.

1. From the **Start** menu select **run** and enter **1 > OK**.

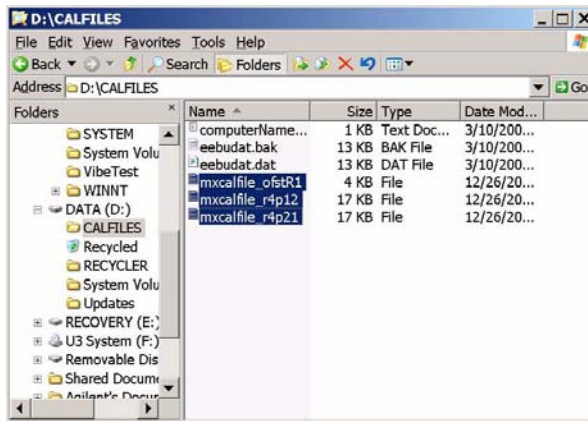


2. Command line “Enter a Choice:”, using the front panel keys enter **[6]**.
3. Command line “Press any key to continue...”, use any front panel key.

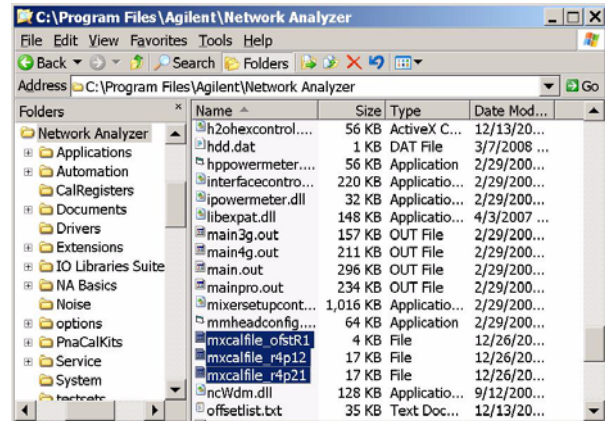


4. Copy the following three mxcalfiles from D:\CALFILES to c:\Program Files\Agilent\Network Analyzer.

From



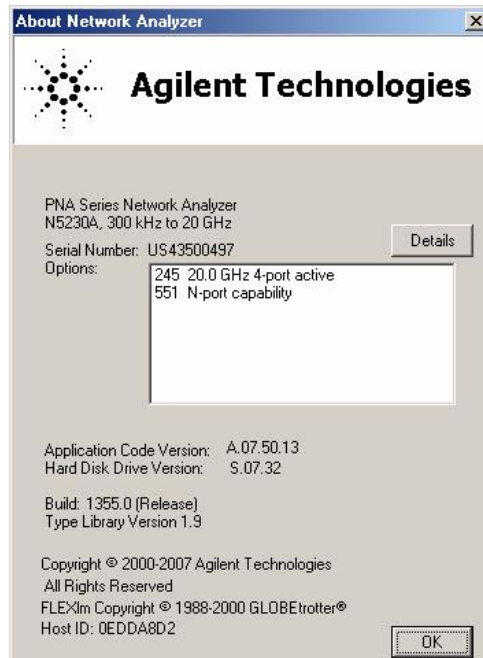
To



N5230A Multiport Mode for Option 551

The PNA Multiport Mode selects the test set file that will enable the PNA to control the Test Set. The PNA Multiport Mode allows you to complete a N-Port calibration using the Cal Wizard application in the PNA. Refer to the PNA Help system for more information.

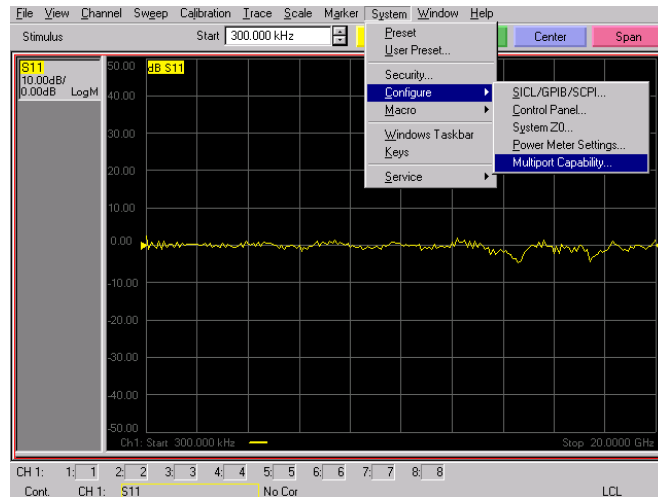
Figure 11 N5230A Options



How to Access Multiport Mode

The Option 551 must be installed for Multiport capability. To access the multiport application select **System > Configure > Multiport Capability**. See [Figure 12](#).

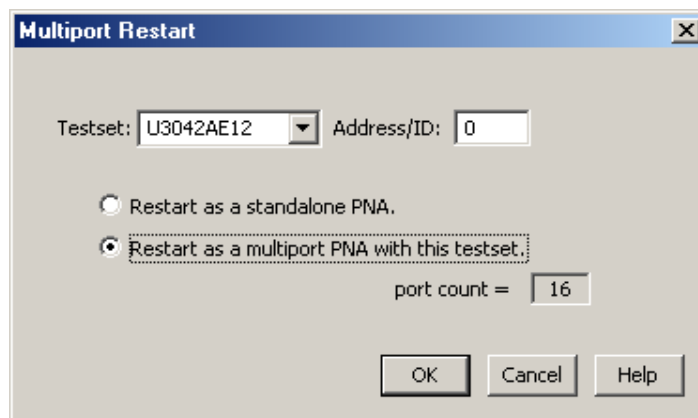
Figure 12 System Configuration



Select **U3042AE12 (16-Port System)** from the test set drop-down menu and select **Restart as a Multiport PNA with this test set**. Press **OK**. The PNA will restart the network analyzer application with the U3042AE12 Multiport Test Set interface features. See [Figure 13](#).

If the U3042E12 is not available in the testset list, it will be necessary for you to copy the required test set file to the PNA hard drive. The current version of the test set files are available on the web at <http://na.tm.agilent.com/multiport>. Copy the appropriate file to `c:\Program Files\Agilent\Network Analyzer\testsets`.

Figure 13 U3042AE12 Selection



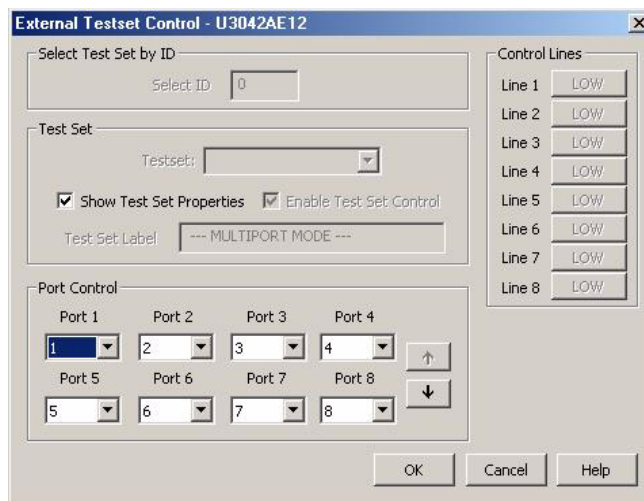
External Test Set Control Feature

To verify that the network application has the U3042AE12 interface features, select **Channel > External Test Set > Other**. The U3042AE12 will be displayed as **External Test Set Control-U3042AE12**. See [Figure 14](#).

This menu will allow the physical Ports 1 thru 16 to be identified as any port for your convenience. For example; Port 5 can be named Port 2.

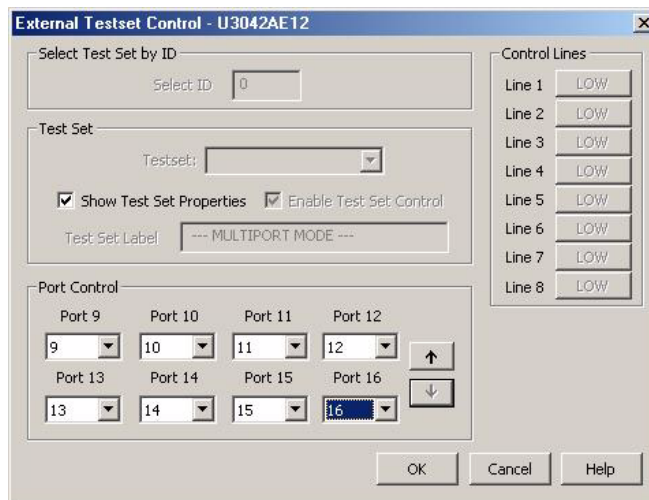
The **External Test Set Control-U3042AE12** also allows control of the DUT control lines, refer to [“DUT Control Lines” on page 56](#). To change the state from LOW to HIGH, select the graphical user interface (GUI) for the specific control (LINE 1 thru 8) and then press OK. Each line can be controlled separately, see [Figure 14](#).

Figure 14 External Test Set U3042AE12 (Port 1 - 8)



Select the **Port Control** down arrow for Ports 9 thru 16, see [Figure 15](#).

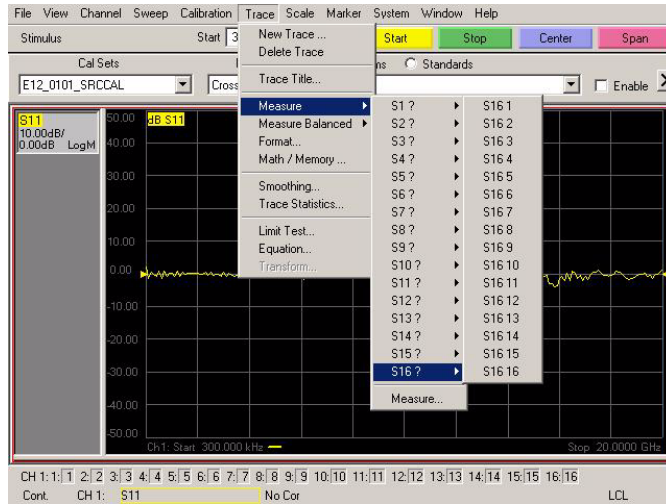
Figure 15 External Test Set U3042AE12 (Port 9 - 16)



Trace Measure S-Parameter

S-Parameter selection can be accomplished using **Trace Measure** menu. Select **TRACE > Measure**. Use the drop-down menus to select 1 of 256 S-Parameters for the 16-Port system, see [Figure 16](#). The first number in the Sxx selection is the Receiver Port and the second number will be the Source Port. Any port can be selected to be the Receiver, Source or both, as in S11. The front panel R LED indicates the port is the Receiver and the S LED indicates the port is the Source.

Figure 16 N5230A Trace Measure



New Trace Measure S-Parameter

S-Parameter Tab:

Multiple S-Parameters can be made from the **New Measurement** menu. In the drop-down menu select **Trace > New Trace**. The **New Measurement** window allows the selection of any of the 256 S-Parameter's. See [Figure 17](#) and [Figure 18](#).

Figure 17 16-Port New Trace Measure (S11 - S55)

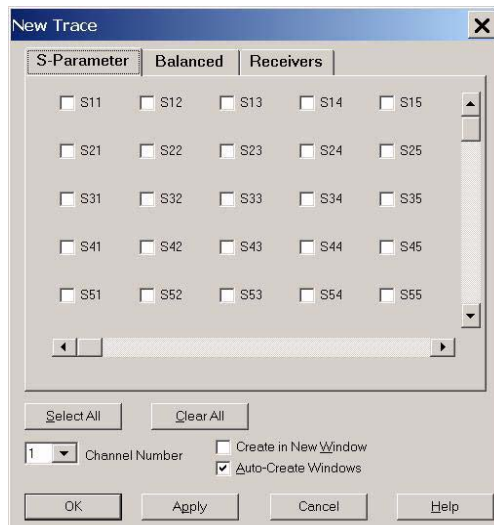


Figure 18 16-Port New Trace Measure (S88 - S1212)

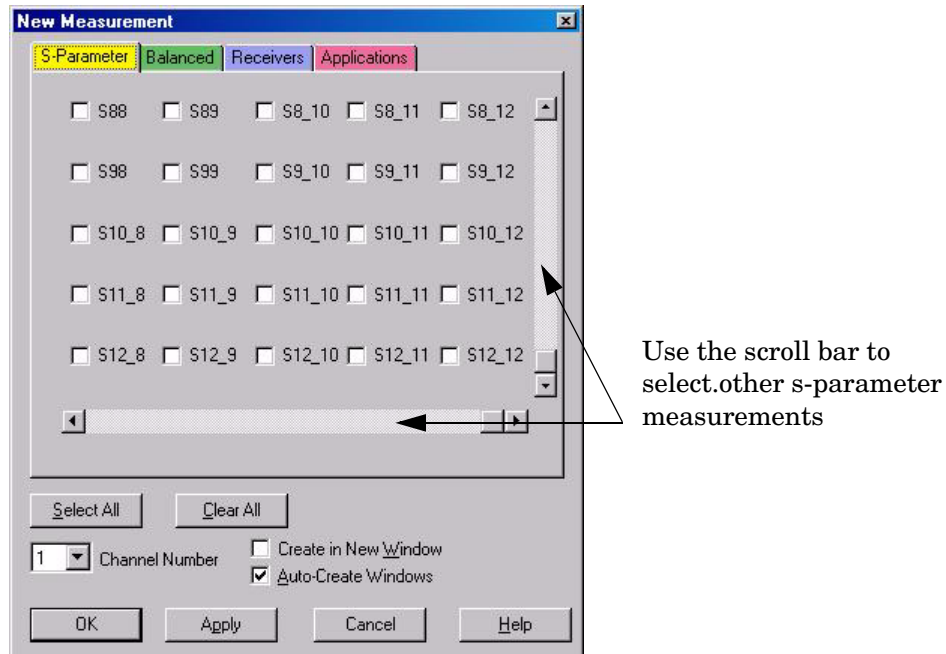
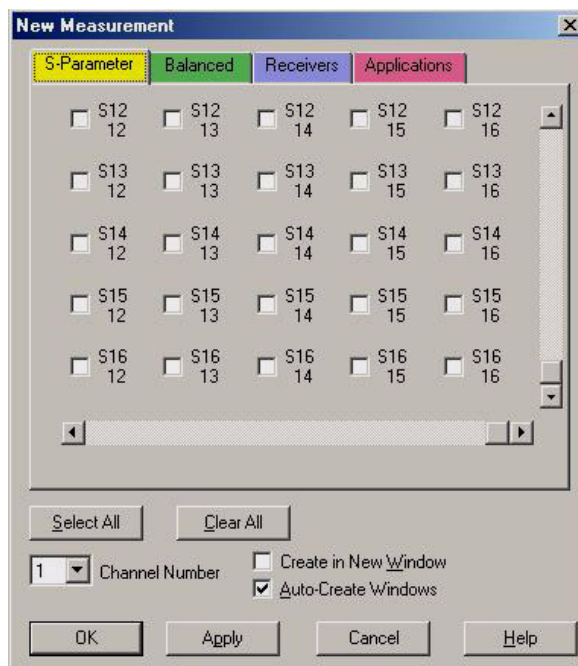


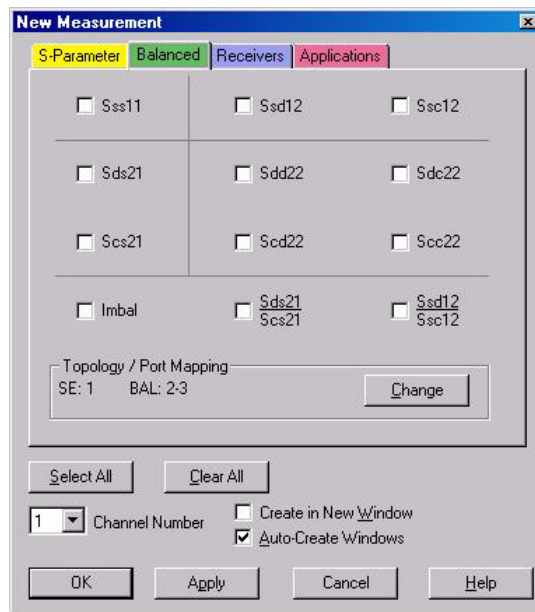
Figure 19 16-Port New Trace Measure (S1212 - S1616)



Balanced Tab: Balanced Measurements can be configured by selecting the Balance tab in the **New Measurement** menu. Refer to [Figure 20](#).

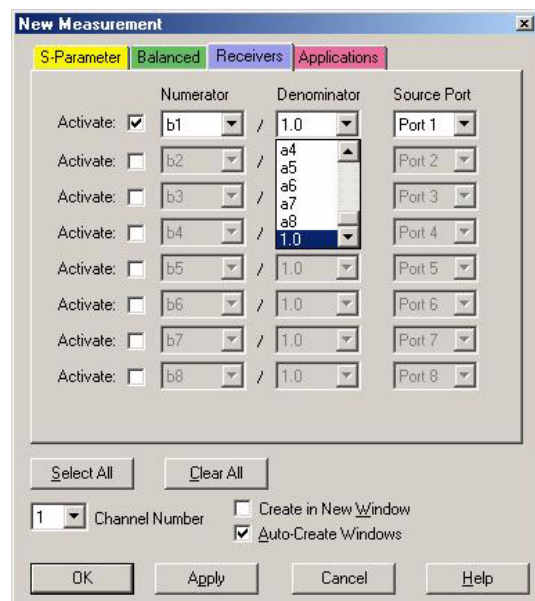
For more information on balanced (differential) component measurement, refer to the Application Note 1373-1 and 1373-2 (5988-5634EN and 5988-5635EN) at <http://www.home.agilent.com>. In the search menu type in “**Multiport and Balanced.**”

Figure 20 Balance



Receiver Tab: The S-Parameter measurements can be ratioed with selectable Denominators for each port and receiver. Refer to the standard N5230A PNA-L documentation for more information.

Figure 21 Receiver Ports



N-Port Calibration with N5230A

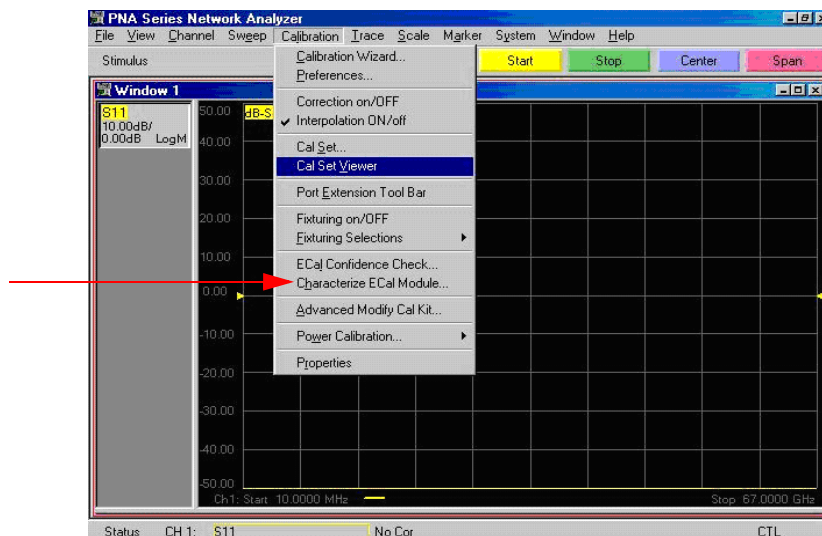
It is recommended that you perform an ECal characterization to minimize the connections required for multiple port calibration. The N4691B Option M0F is recommended with cable (85131F) if you are calibrating at the PNA and test set ports. Characterize the ECal module with adapters that will not be used in the measurement of the DUT.

Calibrate at the end of the test port RF cables and any adapters that are used to connect the DUT. This removes the effect on the measurement of the DUT. Failure to do this will create ripple and other measurement errors. If measurement errors occur, ensure the newest version of firmware is installed on the PNA.

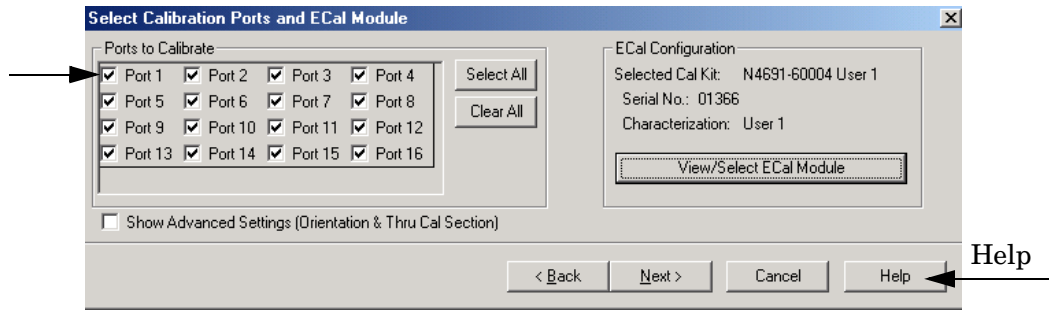
Consult with Agilent Service or the firmware web page for the latest PNA, PNA-L or PNA-X Option 551 firmware revisions and history.

<http://na.tm.agilent.com/pna/firmware/firmware.htm>

Figure 22 ECal Characterization



1. On the network analyzer select **Calibration > Calibration Wizard**.
 - a. If using a mechanical cal kit, select **SmartCal**.
 - b. If using an ECal module, select **ECal**.
2. Continue following the Cal Wizard prompts. On the “Select Calibration Ports and ECal Module” window, press **Select All** or select the ports you are calibrating and press **Next**.

Figure 23 16-Port Calibration

3. Connect the ECal or the mechanical cal kit to the ports you are calibrating following the Cal Wizard prompts and press **Measure** after each connection.
4. At the Calibration Completed prompt, select **Save As User Calset** and type the name desired. Press **Save**.
5. After calibrating test set ports, use a quality load and short to verify the calibration on each port or end of the test cable. Measure reflection and confirm the return loss is as expected. If the result is not as expected, repeat the calibration without the test set and ensure that the PNA is in standard (non-multiport) mode.

N5230A Interface Control

NOTE The interface control will not function properly when using the mutliport mode. The multiport mode will reset the switch path commands of the interface control. It is recommended that the PNA be restarted in stand-alone mode if the interface control is being used.

This section includes only the features required in the Interface Control for the U3042AE12 Multiport Test Set. Applications and feature information can be found in the PNA's Help System Menu, "Interface Control."

- Overview
- How to Access Interface Control Settings
- Interface Control Dialog Box

Other connectivity topics can be found in the PNA Series Network Analyzer's Help System Menu.

Overview of the Interface Control

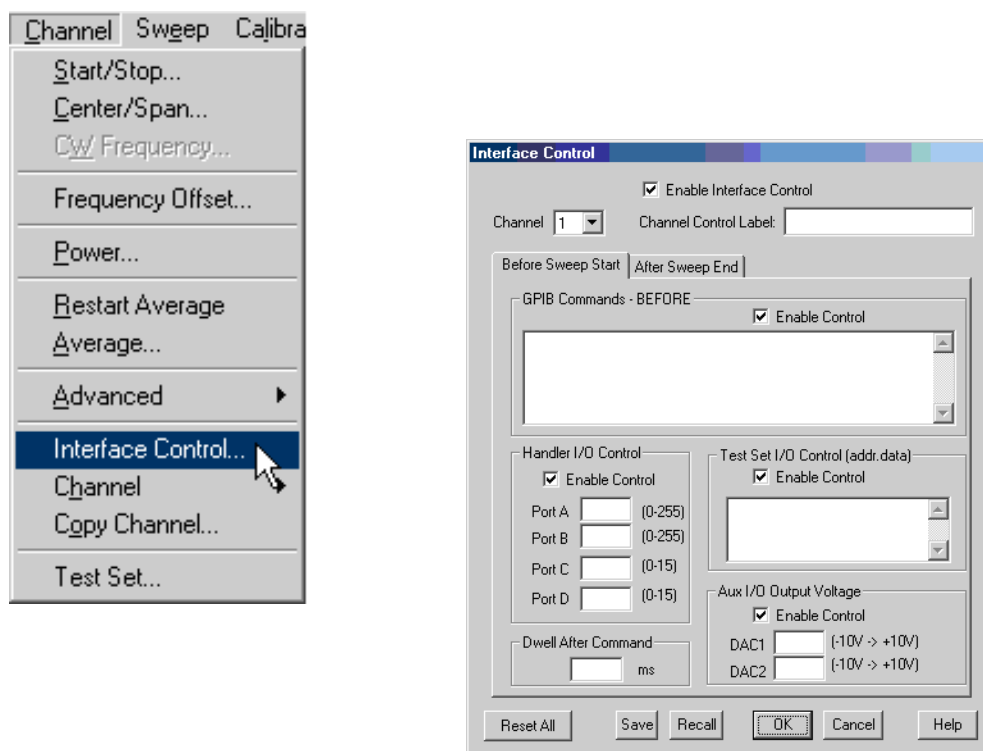
The Interface Control feature allows you to send data and remote commands to control external equipment using the GPIB, Material Handler I/O, Test Set I/O, and Auxiliary I/O without needing to create a remote program. Refer to PNA Series Network Analyzer's Help System Menu, "Rear Panel Tour."

- A unique set of control data can be sent for each channel. In addition, a unique set of control data can be sent before the channel sweep starts and after the sweep ends.
- Interface Control settings can be saved and recalled from the Interface Control Dialog Box or with Instrument State Save and Recall.
- Interface Control settings can be copied to other channels using Copy Channels.
- Control data can only be WRITTEN to the interfaces, NOT READ from the interfaces.
- Control data is sent in the following order and this order cannot be changed:
 1. GPIB Interface
 2. Material Handler Interface (not covered in this manual)
 3. Test Set Interface (not covered in this manual)
 4. Dwell Time (not covered in this manual)

How to Access Interface Control Settings with N5230A

This section will describe how to setup and operate the U3042AE12 Multiport Test Set with the N5230A/C 4-Port Series Network Analyzer. To access the **InterfaceControl** application select **Channel > InterfaceControl** in the drop-down menu.

NOTE The Agilent N5230A/C 4-Port PNA–L Series Network Analyzer comes with the Interface Control application. Please review this application before connecting the U3042AE12 Test Set to the PNA. Information regarding this application can be found in the PNA's **Help** System Menu, **InterfaceControl**. The application is shown below.



NOTE While using Interface Control, the PNA must be in GPIB System Controller mode. Once this is complete you must restart the PNA application to go back to Talker/Listener.

Test Set I/O Address and Data using Control Interface with N5230A

An Instrument Preset will reset all of the fields to their default settings.

NOTE If an error is encountered when sending Interface Control data, an error message is displayed on the PNA screen and the Channel Trigger State is set to Hold. You must fix the condition that caused the error, then change the Channel TriggeState to its original setting.

Enable Interface Control:

Enables and disables ALL Interface Control communication. When cleared (default setting) Interface Control is disabled and NO data is sent. To send data, the individual interfaces must also be enabled.

Channel:

Specifies the channel number for dialog settings. Each channel is configured individually. The list box illustrates the channels that currently have measurements. There must be at least one measurement present in order to make the settings.

Channel Label:

Specifies the label to be displayed on the PNA screen during the channel sweep.

Before Sweep Start– After Sweep End Tabs:

Commands /data for all four interfaces can be sent Before Sweep Start and After Sweep End. However, they are configured and enabled on separate tabs of the Interface Control Dialog Box. For example; to send GPIB commands Before and After a PNA sweep, the Enable Control check box must be selected and commands entered on both the Before Sweep Start and After Sweep End tabs.

Before Sweep Start:

The data is sent before the first trace on the channel begins sweeping.

After Sweep End:

The data is sent after the last trace on the channel completes sweeping.

Address:

Positive integer is used to specify switch path to be controlled. The address also specifies outputs on specific ports. Refer to [“Test Set I/O Interface Commands” on page 61](#).

- 112 = DUT Control
- 0 = Ports 5, 9 and 13
- 16 = Ports 6, 10 and 14
- 32 = Ports 7, 11 and 15
- 64 = Ports 8, 12 and 16

Data:

Positive integer is used to select switch position or state of DUT control interface line. Refer to [Table 16 on page 62](#) through [Table 23 on page 65](#).

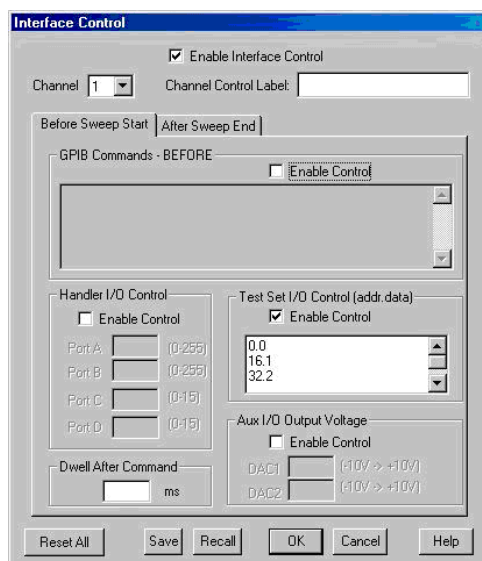
Address and data are separated by a period. Entries should be separated by a new line, or carriage return.

For example:

0.0

16.1

32.2



The front-panel Enter key inserts a new line into the field. The number of Test Set I/O entries that can be entered is limited only by the available memory of the PNA. See [“Test Set I/O Interface Commands” on page 61](#).

Dwell After Command:

Specifies a wait time, in milliseconds, after all commands to all interfaces are sent. Any positive integer is allowed. This is used to allow all external devices to settle before beginning a measurement. An erratic trace could indicate that more settling time is necessary.

Reset All:

Sets all fields on all channels to their default values.

Save and Recall:

Saves and recalls the contents of the dialog box. If the Interface Control dialog box is populated with settings during an Instrument State Save, the settings are automatically recalled with the instrument state settings. Interface control uses an *.xml file type. An example file is stored on the PNA hard drive. You can recall it into the dialog, or you can open and edit it with a word processor, such as Word Pad.

OK:

Applies the settings and closes the dialog box.

Cancel:

Does not apply changes that were made and closes the dialog box.

NOTE U3042AE12 Test Set I/O Commands can be found in [Table 16 on page 62](#) through [Table 23 on page 65](#). The Address and Data commands can be entered into the Test Set I/O control.

N5230A GPIB Control

The GPIB Command Processor feature allows you to send remote commands and data to the PNA rear-panel GPIB connector and test set I/O connector. More information regarding the GPIB Command Processor can be found in the PNA Series Network Analyzer Help System Menu.

- Overview
- How to Access GPIB Command Processor
- GPIB Command Processor Console

Overview of the GPIB Control

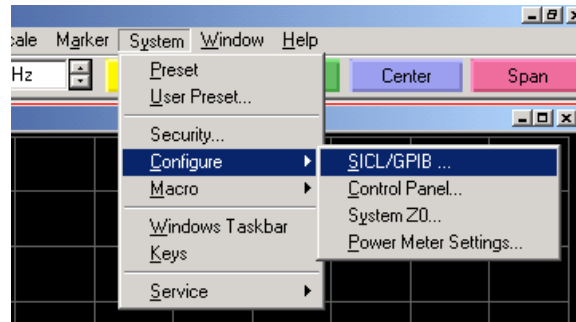
The GPIB Command Processor allows you to send address and data to control an external test set, without needing to create a remote program. The user is required to manually input address and data using the GPIB Command Processor Console in the PNA Series Network Analyzer Help System Menu.

- GPIB Command Processor settings can not be saved or recalled.
- Address and data can be *written* to the GPIB Command Processor and *read* from the GPIB Command Processor.

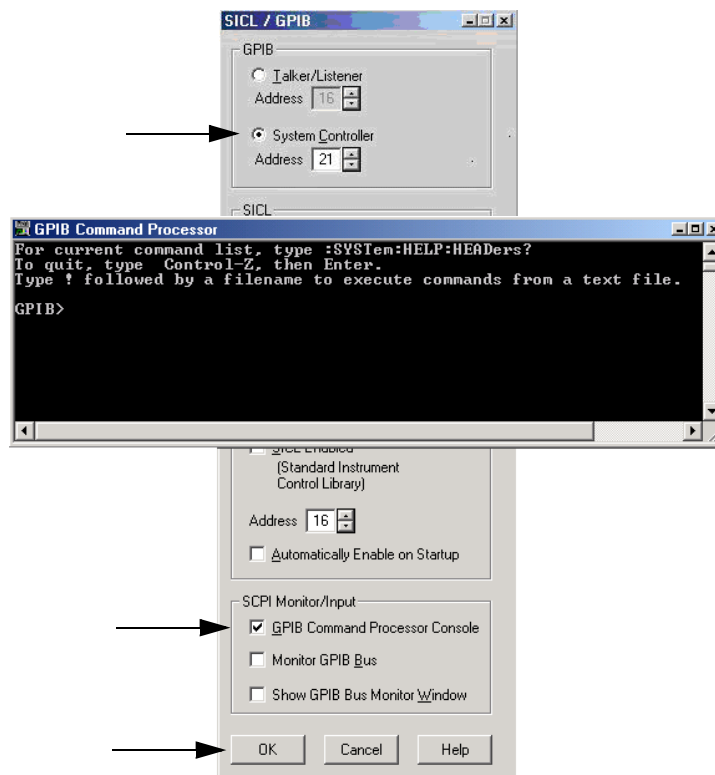
How to Access GPIB Command Processor with N5230A

1. To access the GPIB Command Processor press:

[Menu/Dialog] then tab to **System**, select **Configure > SICL/GPIB**



2. Select System Controller and GPIB Command Processor Console and select OK.



NOTE

If the PNA is not in System Controller mode, an error message appears and the GPIB Command Processor is disabled. To correct this situation, place the PNA in System Controller mode and restart the GPIB Command Processor Console.

GPIB Command Processor Console

Write Commands Once the GPIB Command Processor Console is open, commands can remotely control the external Test Set I/O connector by sending the following:

address: a integer number

data: a integer number

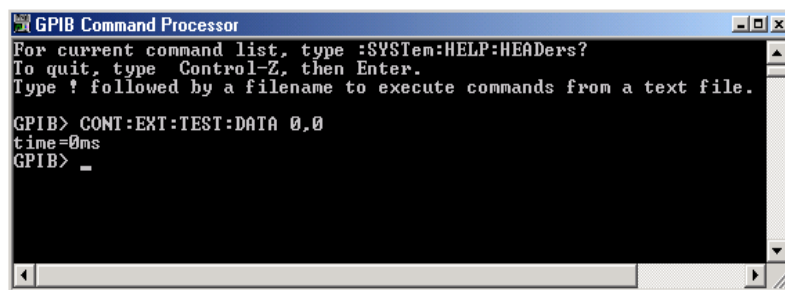
Address and data are separated by a comma. Commands should be separated by a new line, or carriage return.

For example:

```
CONT:EXT:TEST:DATA <address>,<data>
```

```
CONT:EXT:TEST:DATA 0,0
```

Example: CONT:EXT:TEST:DATA 0,0



```

GPIB Command Processor
For current command list, type :SYSTem:HELP:HEADers?
To quit, type Control-Z, then Enter.
Type ! followed by a filename to execute commands from a text file.

GPIB> CONT:EXT:TEST:DATA 0,0
time=0ms
GPIB> _
  
```

Read Commands

address: a integer number

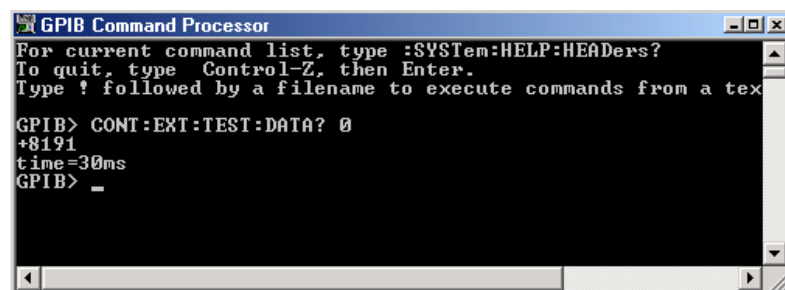
Address is entered, data value will be returned. Commands should be executed with a carriage return (enter).

For example:

```
CONT:EXT:TEST:DATA? <address>
```

```
CONT:EXT:TEST:DATA? 0
```

Example: CONT:EXT:TEST:DATA? 0



```

GPIB Command Processor
For current command list, type :SYSTem:HELP:HEADers?
To quit, type Control-Z, then Enter.
Type ! followed by a filename to execute commands from a text file.

GPIB> CONT:EXT:TEST:DATA? 0
+8191
time=30ms
GPIB> _
  
```

This command reads the decimal equivalent of the binary data from the specified address. The example shown above illustrates address is 0 and the returned data is 8191. Refer to [Table 16 on page 62](#).

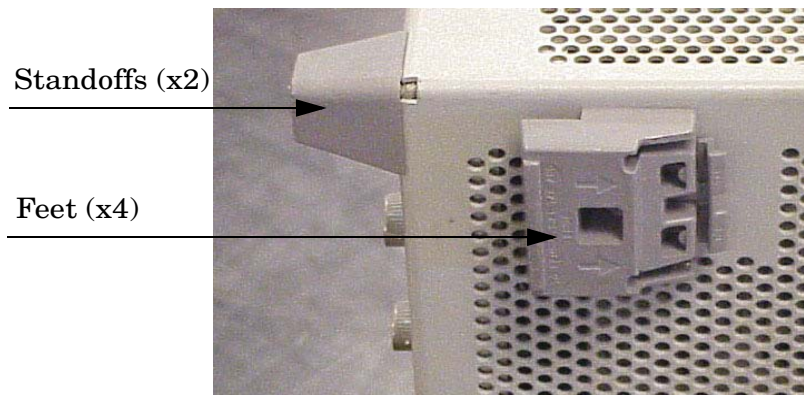
System Setup with N5242A

WARNING The opening of covers or removal of parts is likely to expose dangerous voltages. Disconnect the instrument from all voltage sources while it is being opened.

Preparing the N5242A Network Analyzer

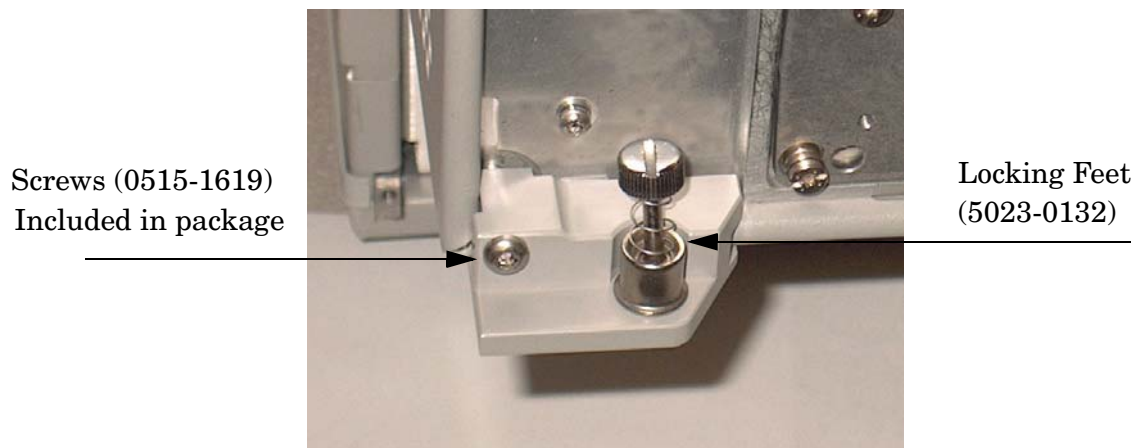
1. Remove the feet from the bottom of the network analyzer. Refer to [Figure 24](#).
2. Remove the 2 lower standoffs and screws (0515-1619) from the rear panel on the network analyzer.

Figure 24 Rear Bottom Feet



3. Install the two rear locking feet (5023-0132) onto the PNA-X, using the included screws (0515-1619), where the standoffs were removed. Refer to [Figure 25](#).

Figure 25 Install Locking Feet on N5242A



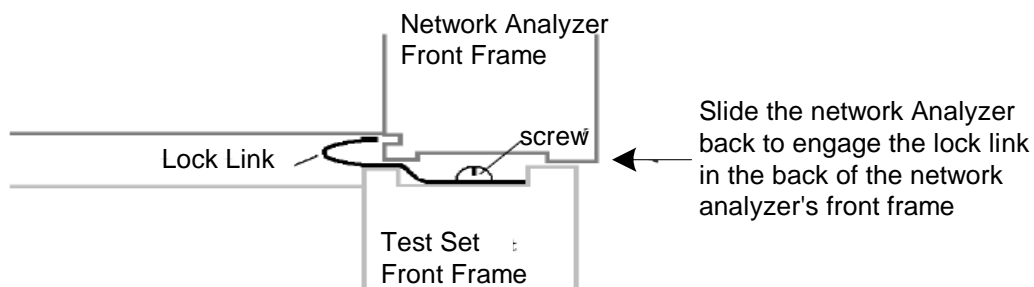
4. Install the two rear locking feet onto the U3042AE12. Looking at the front panel, the N5242-20138 is the right foot and the N5242-20139 is the left foot. Two screws (0515-2317) are included with this option. Refer to [Figure 26](#).

Figure 26 Install Locking Feet on U3042AE12



5. Place the network analyzer on top of the Test Set and ensure that the front frame of the network analyzer is positioned slightly forward of the locks that are attached to the Test Set. Slide the network analyzer back so the locks engage the front frame of the analyzer. Refer to [Figure 27](#).

Figure 27 Locking the Analyzer's



- Secure the network analyzer's lower locking feet to the Test Set upper locking feet, using the spring-loaded screws on the locking feet. Refer to [Figure 28](#). If the network analyzer's lower locking feet are not aligned with the screw holes in the Test Set's upper locking feet, loosen the screws securing the feet to the instrument slightly to align.

Figure 28 Locking Feet Screws



NOTE There are two Lock-Feet kits available. Refer to [“Contacting Agilent” on page 94](#) for ordering information.

- PNA – 5023-0132 (Kit includes locking feet and screws)
 - Test Set – N5242-20138 (right foot) and N5242-20139 (left foot).
 - Screw – 0515-2317
-

N5242A RF Interface Cable Connections

Figure 29 on page 39 illustrates the setup configuration of the U3042AE12 Multiport Test Set and how it should be configured to the PNA-X. The cables have been supplied with Option 042.

1. Connect the RF interconnect cables from the PNA-X to the Test Set in the order listed. As you are connecting each cable, torque to 8 in-lb. The longer, straight end of each cable is connected to the test set. Refer to Table 11 and Figure 29 on page 39.

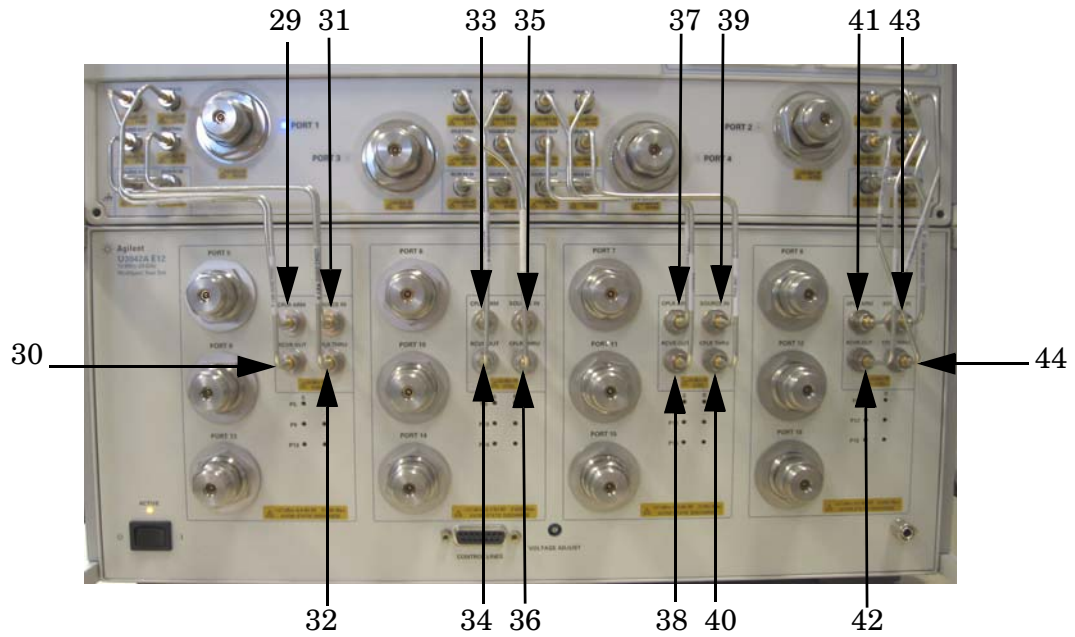
CAUTION Over torque will cause damage to the test set and may cause connectors to spin or become loose.

Table 11 N5242A RF Interface Cable Connection (Option 042)

Numeric Order	RF Cables	From PNA-X	To Test Set
1	U3042-20031	Port 1 SOURCE OUT	Port 5 SOURCE IN
2	U3042-20032	Port 1 CPLR THRU	Port 5 CPLR THRU
3	U3042-20029	Port 1 CPLR ARM	Port 5 CPLR ARM
4	U3042-20030	Port 1 RCVR A IN	Port 5 RCVR OUT
5	U3042-20035	Port 3 SOURCE OUT	Port 6 SOURCE IN
6	U3042-20033	Port 3 CPLR ARM	Port 6 CPLR ARM
7	U3042-20034	Port 3 RCVR C IN	Port 6 RCVR OUT
8	U3042-20036	Port 3 CPLR THRU	Port 6 CPLR THRU
9	U3042-20039	Port 4 SOURCE OUT	Port 7 SOURCE IN
10	U3042-20037	Port 4 CPLR ARM	Port 7 CPLR ARM
11	U3042-20038	Port 4 RCVR D IN	Port 7 RCVR OUT
12	U3042-20040	Port 4 CPLR THRU	Port 7 CPLR THRU
13	U3042-20041	Port 2 CPLR ARM	Port 8 CPLR ARM
14	U3042-20044	Port 2 CPLR THRU	Port 8 CPLR THRU
15	U3042-20043	Port 2 SOURCE OUT	Port 8 SOURCE IN
16	U3042-20042	Port 2 RCVR B IN	Port 8 RCVR OUT

Figure 29 indicates the final two digits of the part number for each cable.

Figure 29 N5242A RF Interface Cable Connections



2. Connect the PNA-X Test Set I/O cable (8120-6818) to the U3042AE12 Test Set Interface on the rear panel.

Figure 30 N5242A Test Set I/O Cable Connection



Controlling the Test Set with N5242A or N5230C

This section will describe how to setup and operate the U3042AE12 Multiport Test Set with the N5242A or N5230C. Both will be referred to as the PNA-X in this section.

The U3042AE12 Multiport Test Set is considered a “slave” instrument. A PNA-X must be used to control the Test Set. There are three methods to control the Test Set. Multiport mode is recommended due to calibration and ease of use.

- PNA Multiport Mode firmware revision:
N5242A Option 551 ≥ A.08.04.07
N5230C Option 551 ≥ A.08.04.10

The following test set file must be installed into network analyzer file directory:
c:\Program Files\Agilent\Network Analyzer\testsets

4-Port PNA-L requires test set: u3042ae12_p4.tsx
4-Port PNA-X requires test set: u3042ae12_pna_p4.tsx

- PNA Interface Control
- PNA GPIB Command Processor

Visit our website for firmware revision and
downloads.<http://na.tm.agilent.com/pna/firmware/firmware.htm>

You may also refer to “[Installing New Firmware](#)” on page 18 in this manual.

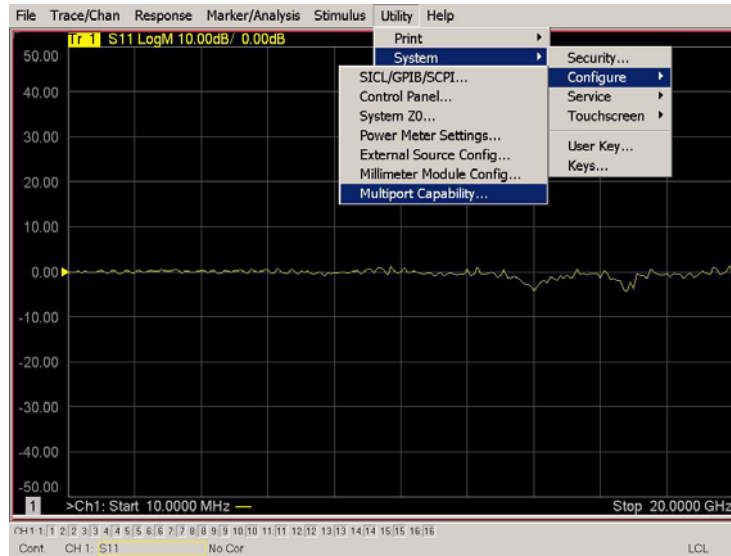
PNA Multiport Mode for Option 551

The PNA multiport mode selects the test set file that will enable the PNA to control the Test Set. The PNA-X multiport mode allows you to complete a N-Port calibration using the Cal Wizard application in the PNA. Refer to the PNA Help system for more information.

How to Access Multiport Mode

The Option 551 must be installed for Multiport capability. To access the multiport application select **Utility > System > Configure > Multiport Capability**. See [Figure 31](#).

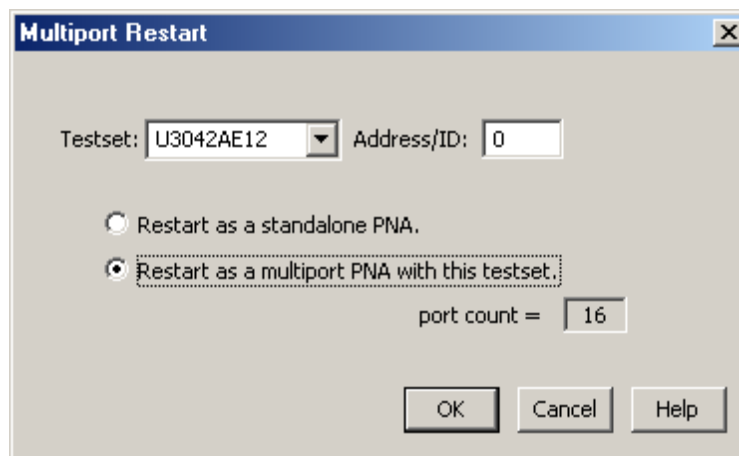
Figure 31 Selecting Multiport Mode



Select **U3042AE12** (16-Port System) from the test set drop-down menu and select **Restart as a Multiport PNA with this test set**. Press OK. The PNA will restart the network application with the U3042AE12 Multiport Test Set interface features, see [Figure 32](#).

If the U3042E12 is not available in the testset list, it will be necessary for you to copy the required test set file to the PNA hard drive. The current version of the test set files are available on the web at <http://na.tm.agilent.com/multiport>. Copy the appropriate file to c:\program files\Agilent\Network Analyzer\testsets directory.

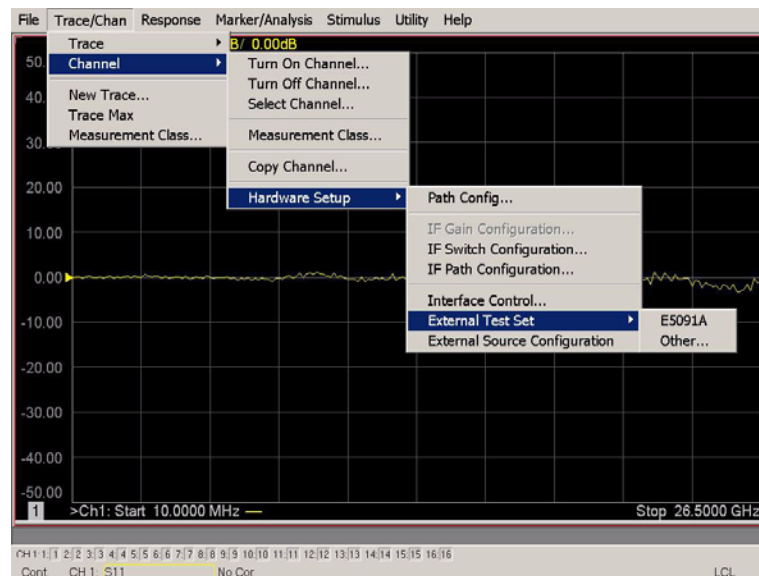
Figure 32 U3042AE12 Selection



External Test Set Control Feature

To verify that the network application has the U3042AE12 interface features, select **Trace/Chan > Channel > Hardware Setup > External Test Set > Other**. The U3042AE12 will be displayed as **External Test Set Control-U3042AE12**. See [Figure 33](#), [Figure 34](#) and [Figure 35](#).

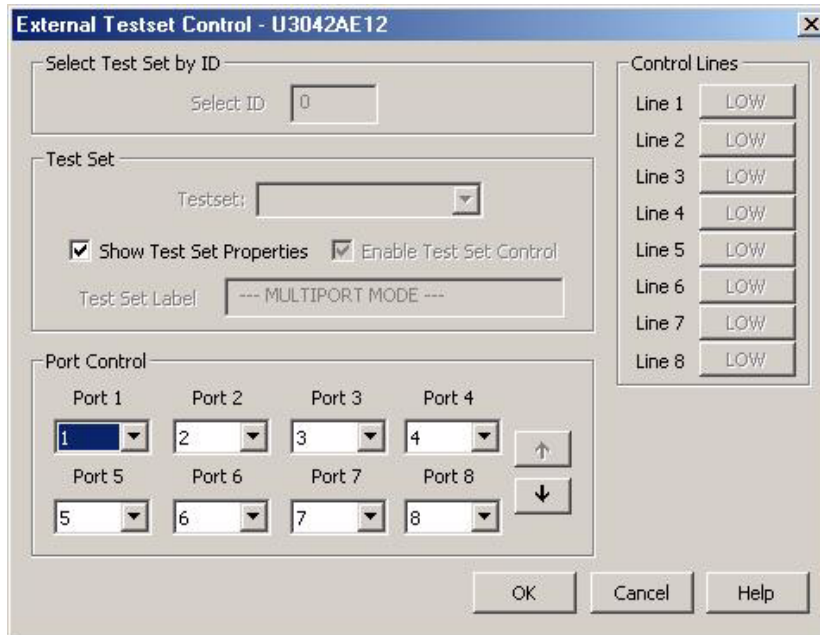
Figure 33 External Test Set Control



This menu will allow the physical Ports 1 thru 16 to be identified as any port for your convenience. For example; Port 5 can be named Port 2.

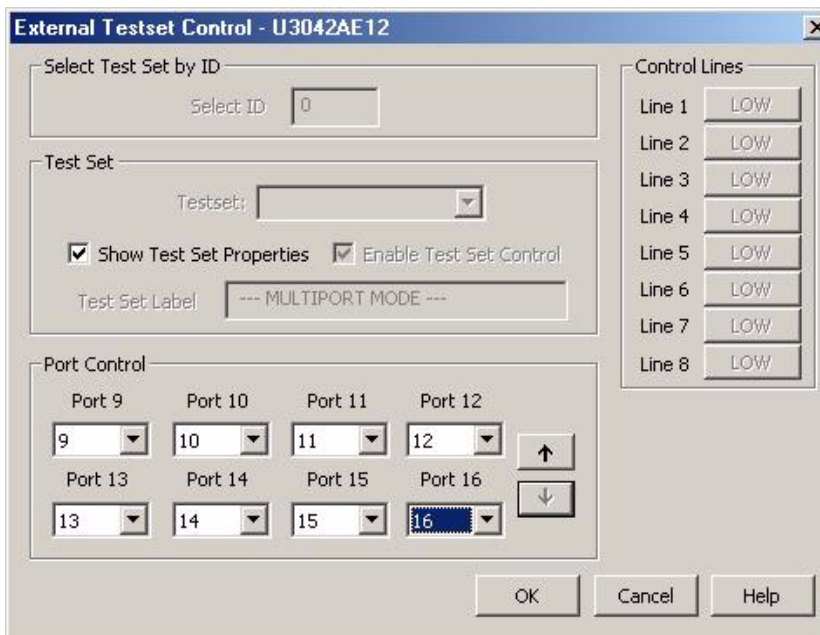
The **External Test Set Control-U3042AE12** also allows control of the DUT control lines, refer to [“DUT Control Lines” on page 56](#). To change the state from LOW to HIGH, select the graphical user interface (GUI) for the specific control (LINE 1 thru 8) and then press OK. Each line can be controlled separately, see [Figure 34](#).

Figure 34 External Test Set U3042AE12 (Port 1 - 8)



Select the **Port Control** down arrow for Ports 9 thru 16, see [Figure 35](#).

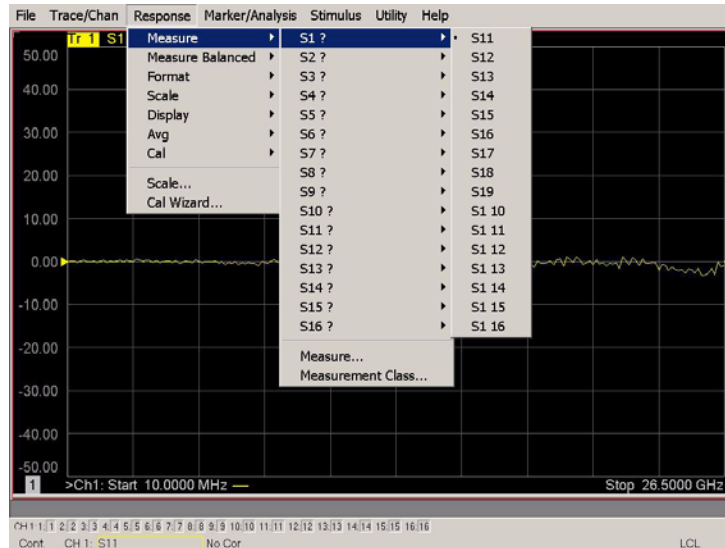
Figure 35 External Test Set U3042AE12 (Port 9 - 16)



Trace Measure S-Parameter

S-Parameter selection can be accomplished using **Response > Measure**. Use the drop-down menus to select 1 of 256 S-Parameters for the 16-Port system, see [Figure 36](#). The first number in the Sxx selection is the Receiver Port and the second number will be the Source Port. Any port can be selected to be the Receiver, Source or both, as in S11. The front panel R LED indicates the port is the Receiver and the S LED indicates the port is the Source.

Figure 36 Trace Measure



New Trace Measure S-Parameter

S-Parameter Tab: Multiple S-Parameters can be made from the **New Measurement** menu. In the drop-down menu select **Trace > New Trace**. The **New Measurement** window allows the selection of any of the 256 S-Parameter's. Refer to [Figure 37](#) and [Figure 38](#).

Figure 37 New Trace Measure

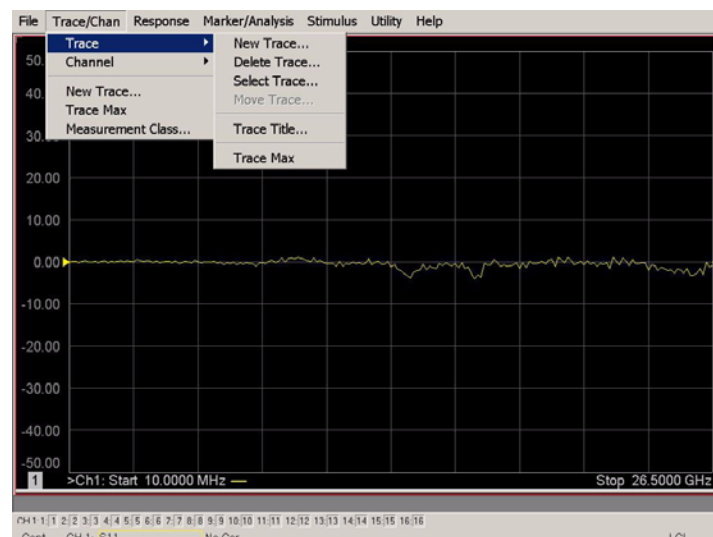


Figure 38 16-Port New Trace Measure (S1 - S5)

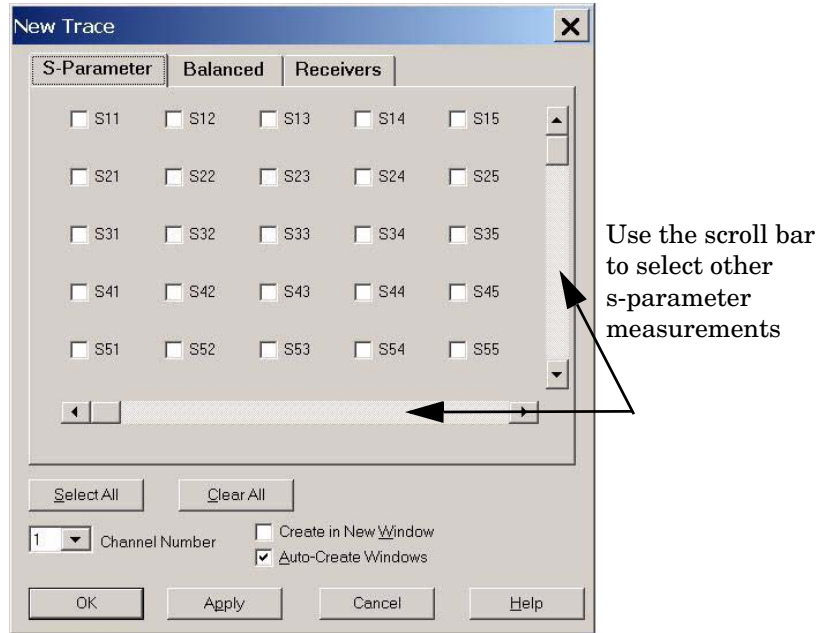
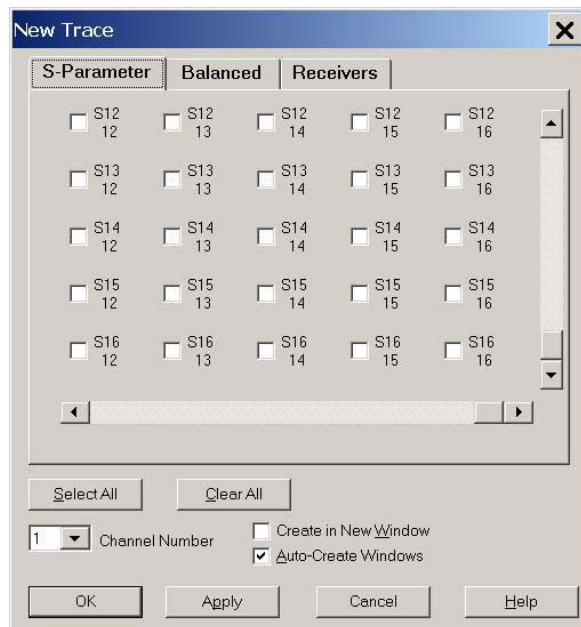


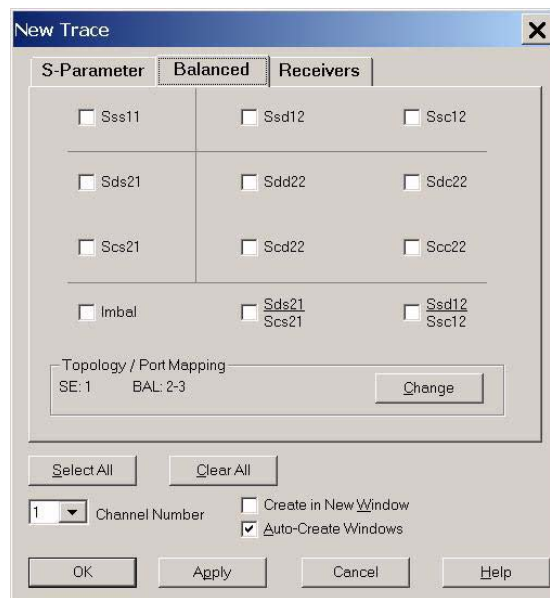
Figure 39 16-Port New Trace Measure (S1212 - S1616)



Balanced Tab: Balanced Measurements can be configured by selecting the Balance tab in the **New Measurement** menu. Refer to [Figure 20 on page 25](#).

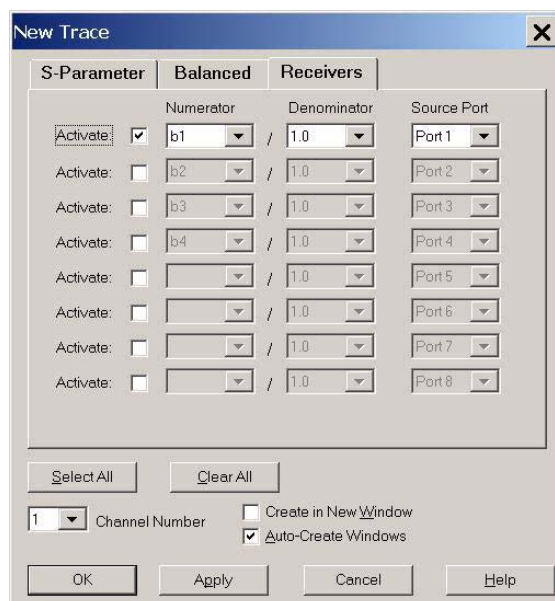
For more information on balanced (differential) component measurement, refer to the Application Note 1373-1 and 1373-2 (5988-5634EN and 5988-5635EN) at <http://www.home.agilent.com>. In the search menu type in **“Multiport and Balanced.”**

Figure 40 Selecting Balanced Measurements



Receiver Tab: The S-Parameter measurements can be ratioed with selectable Denominators for each port and receiver. Refer to the standard PNA-X documentation for more information.

Figure 41 Receiver Measurements



N-Port Calibration with N5242A or N5230C

It is recommended that you perform an ECal characterization to minimize the connections required for multiple port calibration. The N4691B Option M0F is recommended with cable (85131F) if you are calibrating at the PNA and test set ports.

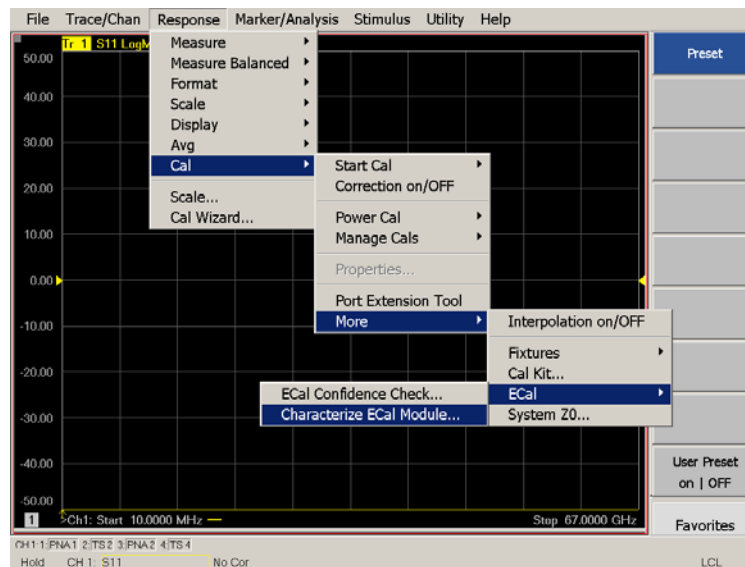
Characterize the ECal module with adapters that will not be used in the measurement of the DUT.

Calibrate at the end of the test port RF cables and any adapters that are used to connect the DUT. This removes the effect on the measurement of the DUT. Failure to do this will create ripple and other measurement errors.

NOTE If measurement errors occur, ensure the newest version of firmware is installed on the PNA. Measurement errors can be a result of firmware algorithms. Consult with Agilent Service or firmware web page for the latest PNA, PNA-L or PNA-X Option 551 firmware revisions and history.
<http://na.tm.agilent.com/pna/firmware/firmware.htm>

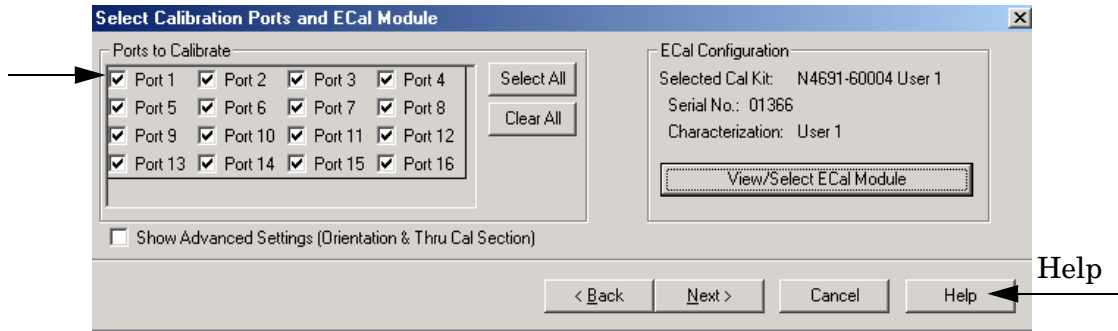
1. On the network analyzer select **Response > Calibration Wizard**.
 - a. If using a mechanical cal kit, select **SmartCal**.
 - b. If using an ECal module, select **ECal**.

Figure 42 ECal Characterization



- Continue following the Cal Wizard prompts. On the “Select Calibration Ports and ECal Module” window, press **Select All** or select the ports you are calibrating and press **Next**.

Figure 43 16-Port Calibration



- Connect the ECal or the mechanical cal kit to the ports you are calibrating following the Cal Wizard prompts and press **Measure** after each connection.
- At the Calibration Completed prompt, select **Save As User Calset** and type the name desired. Press **Save**.
- After calibrating test set ports, use a quality load and short to verify the calibration on each port or end of the test cable. Measure reflection and confirm the return loss is as expected. If the result is not as expected, repeat the calibration without the test set and ensure that the PNA is in standard (non-multiport) mode.

N5242A or N5230C Interface Control

NOTE The interface control will not function properly when using the mutliport mode. The multiport mode will reset the switch path commands of the interface control. It is recommended that the PNA be restarted in stand-alone mode if the interface control is being used.

This section includes only the features required in the Interface Control for the U3042AE12 Multiport Test Set. Applications and feature information can be found in the PNA's Help System Menu, "Interface Control."

- Overview
- How to Access Interface Control Settings
- Interface Control Dialog Box

Other connectivity topics can be found in the PNA Series Network Analyzer's Help System Menu.

Overview of the Interface Control

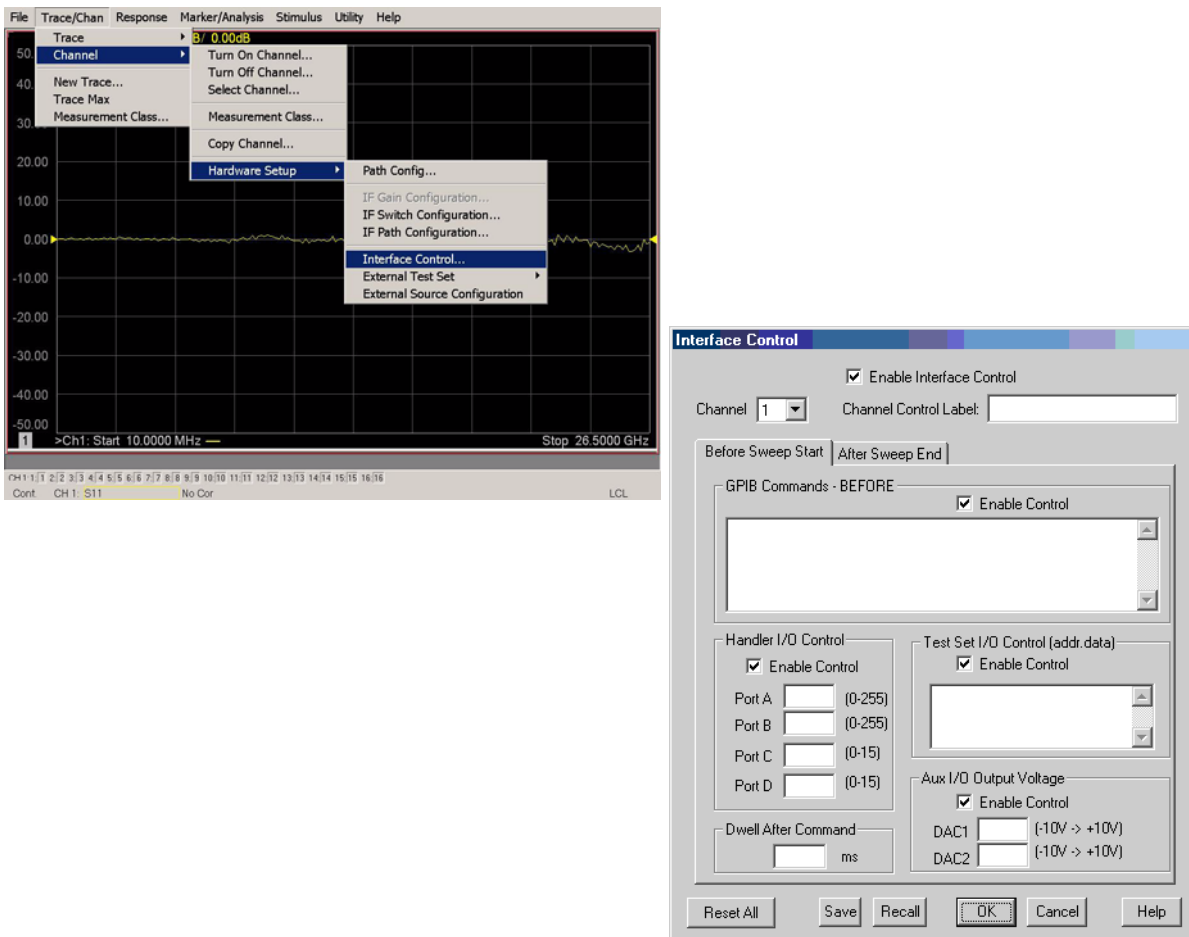
The Interface Control feature allows you to send data and remote commands to control external equipment using the GPIB, Material Handler I/O, Test Set I/O, and Auxiliary I/O without needing to create a remote program. Refer to PNA Series Network Analyzer's Help System Menu, "Rear Panel Tour."

- A unique set of control data can be sent for each channel. In addition, a unique set of control data can be sent before the channel sweep starts and after the sweep ends.
- Interface Control settings can be saved and recalled from the Interface Control Dialog Box or with Instrument State Save and Recall.
- Interface Control settings can be copied to other channels using Copy Channels.
- Control data can only be WRITTEN to the interfaces, NOT READ from the interfaces.
- Control data is sent in the following order and this order cannot be changed:
 1. GPIB Interface
 2. Material Handler Interface (not covered in this manual)
 3. Test Set Interface (not covered in this manual)
 4. Dwell Time (not covered in this manual)

How to Access Interface Control Settings

This section will describe how to setup and operate the U3042AE12 Multiport Test Set with the PNA-X. To access the Interface Control application select **Trace/Chan > Channel > Hardware Setup > Interface Control** in the drop-down menu.

NOTE The PNA-X Series Network Analyzer comes with the Interface Control application. Please review this application before connecting the U3042AE12 Test Set to the PNA. Information regarding this application can be found in the PNA's **Help System Menu, InterfaceControl**. The application is shown below.



NOTE While using Interface Control, the PNA-X must be in GPIB System Controller mode. Once this is complete you must restart the PNA application to go back to Talker/Listener.

Test Set I/O Address and Data using Control Interface with N5242A or N5230C

An Instrument Preset will reset all of the fields to their default settings.

NOTE If an error is encountered when sending Interface Control data, an error message is displayed on the PNA screen and the Channel Trigger State is set to Hold. You must fix the condition that caused the error, then change the Channel TriggeState to its original setting.

Enable Interface Control:

Enables and disables ALL Interface Control communication. When cleared (default setting) Interface Control is disabled and NO data is sent. To send data, the individual interfaces must also be enabled.

Channel:

Specifies the channel number for dialog settings. Each channel is configured individually. The list box illustrates the channels that currently have measurements. There must be at least one measurement present in order to make the settings.

Channel Label:

Specifies the label to be displayed on the PNA screen during the channel sweep.

Before Sweep Start– After Sweep End Tabs:

Commands /data for all four interfaces can be sent Before Sweep Start and After Sweep End. However, they are configured and enabled on separate tabs of the Interface Control Dialog Box. For example; to send GPIB commands Before and After a PNA sweep, the Enable Control check box must be selected and commands entered on both the Before Sweep Start and After Sweep End tabs.

Before Sweep Start:

The data is sent before the first trace on the channel begins sweeping.

After Sweep End:

The data is sent after the last trace on the channel completes sweeping.

Address:

Positive integer is used to specify switch path to be controlled. Address also specifies output on specific ports. Refer to [“Test Set I/O Interface Commands” on page 61](#).

- 112 = DUT Control
- 0 = Ports 5, 9 and 13
- 16 = Ports 6, 10 and 14
- 32 = Ports 7, 11 and 15
- 64 = Ports 8, 12 and 16

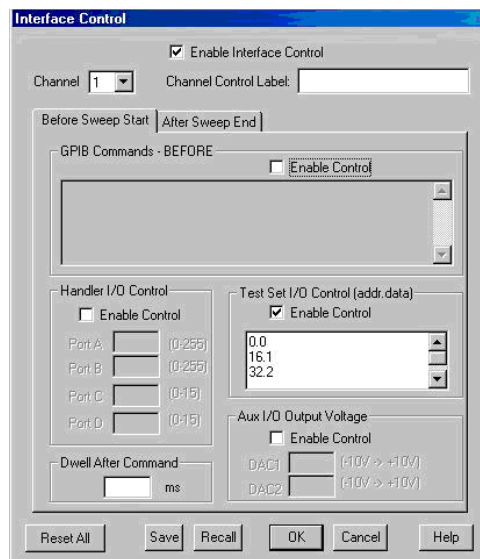
Data:

Positive integer is used to select switch position or state of DUT control interface line. Refer to [Table 16 on page 62](#) through [Table 23 on page 65](#).

Address and data are separated by a period. Entries should be separated by a new line, or carriage return.

For example:

0.0
16.1
32.2



The front-panel Enter key inserts a new line into the field. The number of Test Set I/O entries that can be entered is limited only by the available memory of the PNA. See [“Test Set I/O Interface Commands” on page 61](#).

Dwell After Command:

Specifies a wait time, in milliseconds, after all commands to all interfaces are sent. Any positive integer is allowed. This is used to allow all external devices to settle before beginning a measurement. An erratic trace could indicate that more settling time is necessary.

Reset All:

Sets all fields on all channels to their default values.

Save and Recall:

Saves and recalls the contents of the dialog box. If the Interface Control dialog box is populated with settings during an Instrument State Save, the settings are automatically recalled with the instrument state settings. Interface control uses an *.xml file type. An example file is stored on the PNA hard drive. You can recall it into the dialog, or you can open and edit it with a word processor, such as Word Pad.

OK:

Applies the settings and closes the dialog box.

Cancel:

Does not apply changes that were made and closes the dialog box.

NOTE U3042AE12 Test Set I/O Commands can be found in [“Test Set I/O Interface Commands” on page 61](#). The Address and Data commands can be entered into the Test Set I/O control.

N5242A or N5230C GPIB Control

The GPIB Command Processor feature allows you to send remote commands and data to the PNA rear-panel GPIB connector and test set I/O connector. More information regarding the GPIB Command Processor can be found in the PNA Series Network Analyzer Help System Menu.

- Overview
- How to Access GPIB Command Processor
- GPIB Command Processor Console

Overview of the GPIB Control

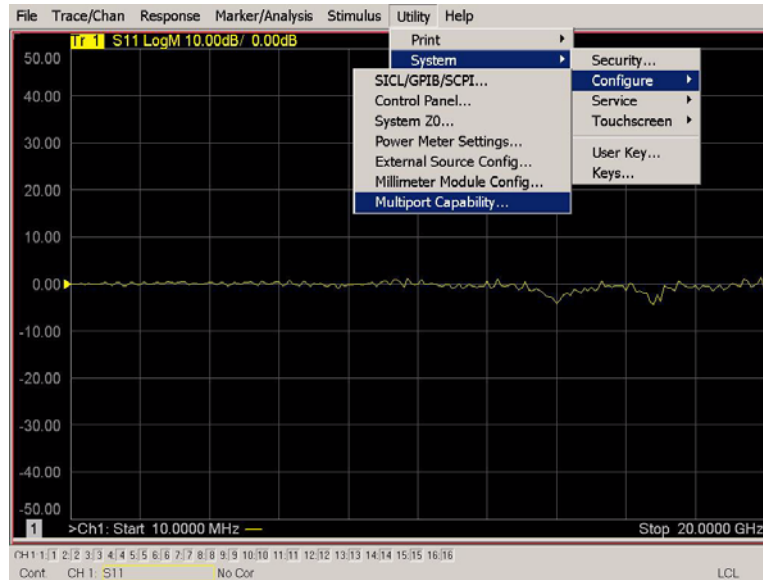
The GPIB Command Processor allows you to send address and data to control an external test set, without needing to create a remote program. The user is required to manually input address and data using the GPIB Command Processor Console in the PNA Series Network Analyzer Help System Menu.

- GPIB Command Processor settings can not be saved or recalled.
- Address and data can be *written* to the GPIB Command Processor and *read* from the GPIB Command Processor.

How to Access GPIB Command Processor

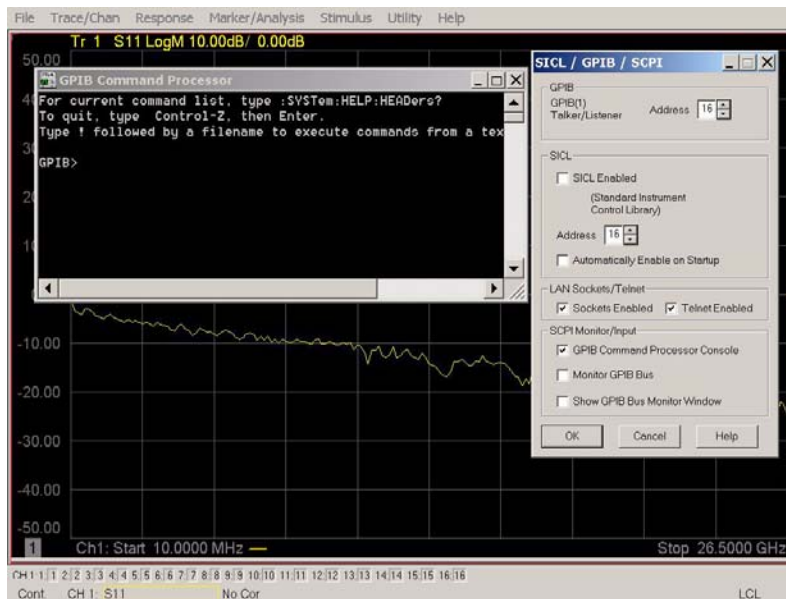
1. To access the GPIB Command Processor press: **Utility > System > Configure > SICL/GPIB/SCPI.**

Figure 44 Utility Configure



2. Check System Controller and GPIB Command Processor Console and select OK.

Figure 45 GPIB Command Processor



GPIB Command Processor Console

Write Commands Once the GPIB Command Processor Console is open, commands can remotely control the external Test Set I/O connector by sending the following:

address: a integer number

data: a integer number

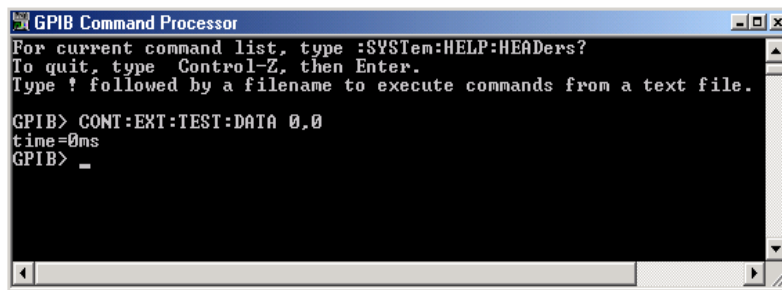
Address and data are separated by a comma. Commands should be separated by a new line, or carriage return.

For example:

```
CONT:EXT:TEST:DATA <address>,<data>
```

```
CONT:EXT:TEST:DATA 0,0
```

Example: CONT:EXT:TEST:DATA 0,0



```

GPIB Command Processor
For current command list, type :SYSTem:HELP:HEADers?
To quit, type Control-Z, then Enter.
Type ! followed by a filename to execute commands from a text file.

GPIB> CONT:EXT:TEST:DATA 0,0
time=0ms
GPIB> _
  
```

Read Commands

address: a integer number

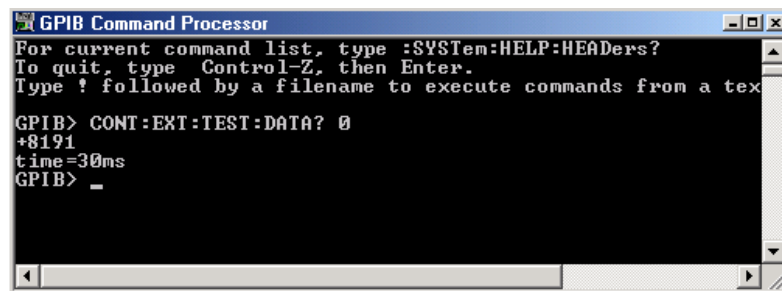
Address is entered, data value will be returned. Commands should be executed with a carriage return (enter).

For example:

```
CONT:EXT:TEST:DATA? <address>
```

```
CONT:EXT:TEST:DATA? 0
```

Example: CONT:EXT:TEST:DATA? 0



```

GPIB Command Processor
For current command list, type :SYSTem:HELP:HEADers?
To quit, type Control-Z, then Enter.
Type ! followed by a filename to execute commands from a text file.

GPIB> CONT:EXT:TEST:DATA? 0
+8191
time=30ms
GPIB> _
  
```

This command reads the decimal equivalent of the binary data from the specified address. The example shown above illustrates address is 0 and the returned data is 8191. Refer to [“Test Set I/O Interface Commands” on page 61](#).

DUT Control Lines

The 15 pin female D-Sub connector on the front panel provides 8 latched data connections that can be used to control your DUT. An adjustable voltage source (+2 to +5 Vdc) is provided on the front panel. A positive or negative external source can be used. Refer to [Table 14](#) and [Figure 49 on page 60](#).

Setting the DUT Control Interface

This section describes how to control the DUT control lines. Refer to “[Controlling the Test Set with N5242A or N5230C](#)” on [page 40](#) or “[Controlling the Test Set with N5230A](#)” on [page 17](#). For more information regarding the control lines, see [Table 12](#) and [Table 13](#).

Table 12 Test Set DUT Control Address and Data

Address	Data	Data AD12-AD0	Description					Bit Data 0= +Voltage 1= -Voltage		
112	0	000000000000	ALL DUT Control Lines set to 0 or + voltage							
112	255	000001111111	ALL DUT Control Lines set to 0 or – voltage							
112	1	00000xxxxxxxB	DUT Control Line 1					0,1		
112	2	00000xxxxxxBx	DUT Control Line 2					0,1		
112	4	00000xxxxxBxx	DUT Control Line 3					0,1		
112	8	00000xxxxBxxx	DUT Control Line 4					0,1		
112	16	00000xxxBxxxx	DUT Control Line 5					0,1		
112	32	00000xxBxxxxx	DUT Control Line 6					0,1		
112	64	00000xBxxxxxx	DUT Control Line 7					0,1		
112	128	00000Bxxxxxxx	DUT Control Line 8					0,1		
Control Lines			Line 8	Line 7	Line 6	Line 5	Line 4	Line 3	Line 2	Line 1
Test Set I/O Bits			AD7	AD6	AD5	AD4	AD3	AD2	AD1	AD0
Bit Decimal Equivalent			128	64	32	16	8	4	2	1
Example 1 Data = 0			0	0	0	0	0	0	0	0
Example 2 Data = 21			0	0	0	1	0	1	0	1
X indicates unknown user bit state										
B indicates bit of interest										
To select a test set DUT control line configuration, all 8 DUT control lines must be set. To do this you must add AD7 to AD0 binary number and convert this to a decimal equivalent.										

NOTE All DUT control lines must be set with each command sent. Logic 0 = high

Figure 46 DUT Control Line Pin Assignment

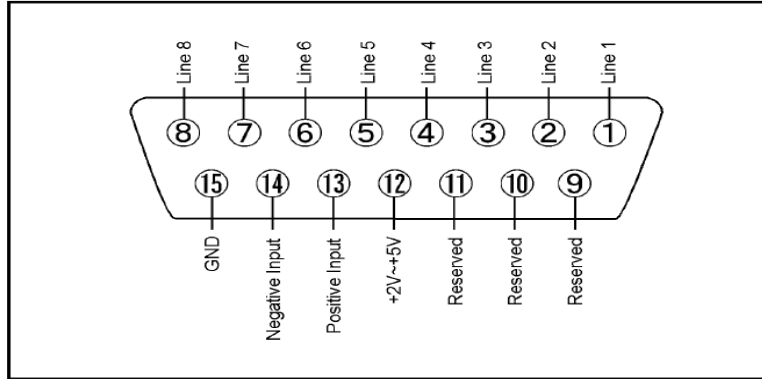


Table 13 DUT Control Line Pin Assignment

Pin Number	Signal Name	Description
1	Line 1	Output port of line 1
2	Line 2	Output port of line 2
3	Line 3	Output port of line 3
4	Line 4	Output port of line 4
5	Line 5	Output port of line 5
6	Line 6	Output port of line 6
7	Line 7	Output port of line 7
8	Line 8	Output port of line 8
9		Not used
10		Not used
11		Not used
12	+2 V to +5 V	The voltage input to pin 13. (The voltage can be varied by rotating the voltage adjustment trimmer on the front panel).
13	Positive Input	Input a signal that is outputted when each line is high from pin 12 or external dc power supply.
14	Negative Input	Input a signal that is outputted when each line is low from the external dc power supply. Able to output 0 V as low from the each line by connecting to pin 15.
15	Gnd	ground terminal

Setting the Variable Source Voltage

The output voltage of pin 12 can be varied from +2 to +5 V. Perform the following procedure to set the voltage:

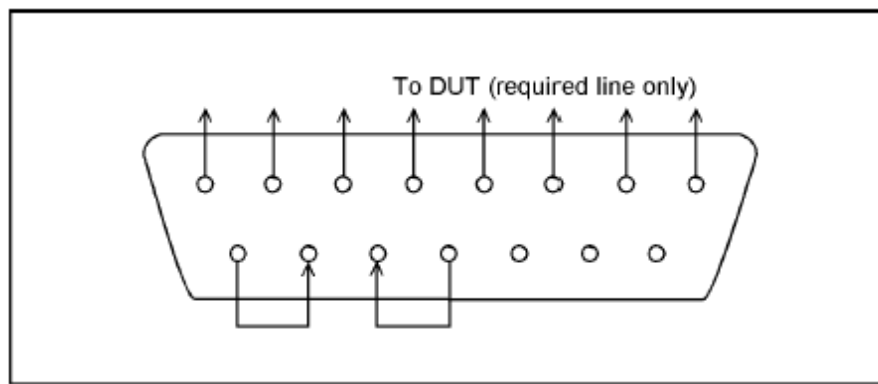
1. Turn On U3042AE12.
2. Measure the voltage between pin 12 and 15 using a multimeter.
3. Rotate the voltage adjustment trimmer on the front panel until the multimeter indicates the appropriate voltage.

Connecting to the DUT Control Lines

Figure 47 illustrates an example of the connection between the DUT and the U3042AE12 *without* an external dc power supply. Connect pin 12 to pin 13 for +5 V, and pin 14 to pin 15 to provide the ground path. Connect each DUT control line to the external device under test.

CAUTION You may only connect pin 12–13, and pin 14–15. Damage may result if any other path is short-circuited.

Figure 47 Control Line Connector



Using an External Power Supply

Figure 48 illustrates an example of the connection between the DUT and the U3042AE12 *with* an external dc power supply. Input the High and Low signals from the external power supply to the Positive Input and Negative Input respectively, and connect each line to the control terminal of the DUT.

Turning On the U3042AE12 using an External Power Supply.

1. Turning On the U3042AE12.
2. Connect the DUT.
3. Turn On the external power supply.

Turning Off the U3042AE12 using an External Power Supply.

1. Turning Off the Power Supply.
2. Turning Off the U3042AE12.
3. Disconnect the DUT.

Figure 48 U3042AE12 to the DUT and External DC Power Supply

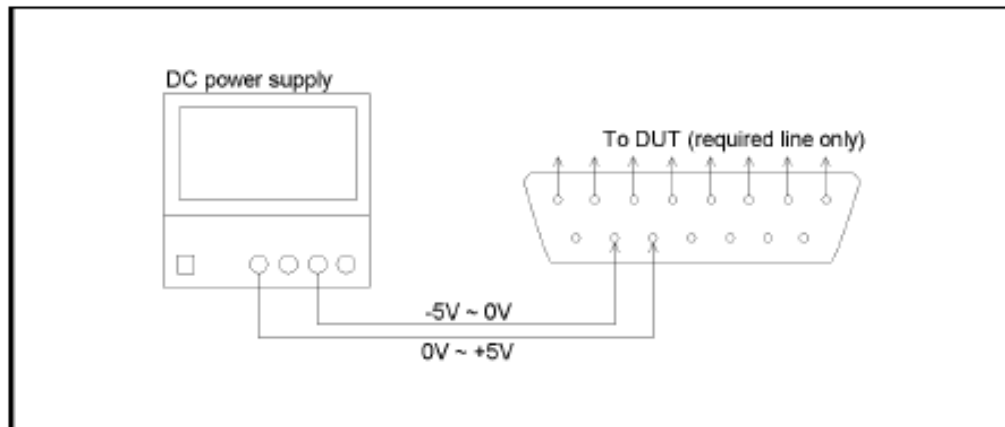
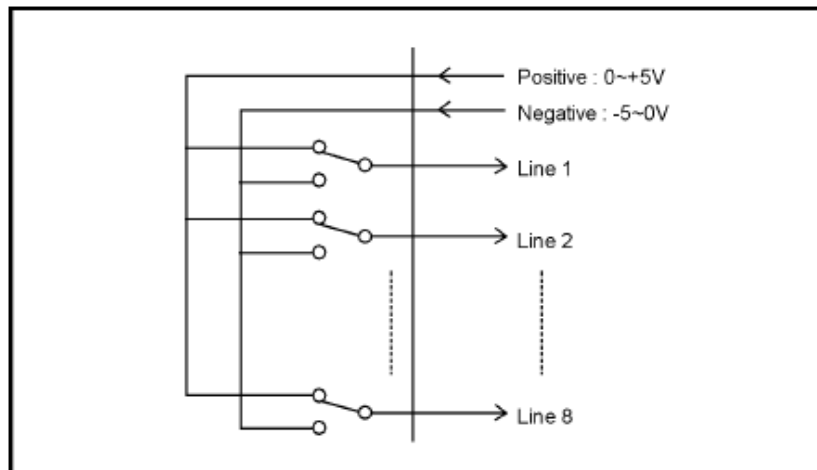


Table 14 DUT Control Specifications

Item	Specifications
Connector Shape	15-pin female D-Sub
Voltage Range:	
Positive Input	0 to +5 V
Negative Input	-5 to 0 V
Maximum Current	100 mA (in total of each line)
Impedance	< 10 Ω
Range of Variable Voltage	+2 to +5 V

Figure 49 Block Diagram of DUT Control

Test Set I/O Interface Commands

Switch Address and Data

Table 16 through Table 23 contain the information to set the internal switch paths of the U3042AE12 Test Set. Additional information regarding the operation and descriptions for the internal switches can be found in “Theory of Operation” on page 83.

The address is the first value in the Test Set I/O control or GPIB data command. The second value controls the source and receiver paths of the ports. To select a test set port configuration both switches must be set to complete the source and receiver paths. To do this you must add the decimal values together to determine the data command value, which is the second number in the test set I/O or GPIB command. Refer Table 15.

Table 16 and Table 17 on page 62 illustrates Port 1, 5, 9 or 13 as the configured source and receiver paths. Refer to Table 15 to calculate other path combinations.

Example:

If Port 5 is to be the source and Port 6 is to be the receiver.

then;

Source Port 5 = address 0, decimal 2 and Receiver Port 6 = address 16, decimal 32. See Table 15. Refer to “How to Access Interface Control Settings with N5230A” on page 29 and in “How to Access GPIB Command Processor with N5230A” on page 33.

Table 15 Port Value Select

Address		Source Path ¹				Receiver Path ²			
		0	1	2	3	4	5	6	7
	Bit	0	1	2	3	4	5	6	7
	Decimal	1	2	4	8	16	32	64	128
0	Ports	1	5	9	13	1	5	9	13
16	Ports	2	6	10	14	2	6	10	14
32	Ports	3	7	11	15	3	7	11	15
64	Ports	4	8	12	16	4	8	12	16

1. All Source switches are 100, 200, 300, and 400.

2. All Receiver switches are 101, 201, 301, and 401.

Table 16 PNA Port 1 and Test Set Ports 1, 5, 9, 13

Address	Decimal Data	Description							
0	D0 - D3	Controls SW100; Source to PNA Port 1 or Test Set Port 1, 5, 9 and 13.							
0	D4 - D7	Controls SW101; Receiver to PNA Port 1 or Test Set Port 1, 5, 9 and 13.							
Test Set I/O Data Bit		D0	D1	D2	D3	D4	D5	D6	D7
Data Bit Decimal Equivalent		1	2	4	8	16	32	64	128

Table 17 Address and Data for Port 1, 5, 9 and 13

Address	Data	Description	Port LED's
0	17	Selects the Port 1 as the Source and Receiver port. Port 5, 9 and 13 terminated with a 50 Ω switch load.	All Off
0	18	Selects the PNA Port 1 as the Receiver and Port 5 as the Source. Ports 9 and 13 terminated with a 50 Ω switch load.	Port 5 S ON
0	35	Selects the Port 1 as the Source Port. Port 5 as the Receiver. Ports 9 and 13 terminated with a 50 Ω switch load.	Port 5 R ON
0	34	Selects the Port 5 as the Source and Receiver port. Port 1, 9 and 13 terminated with a 50 Ω switch load.	Port 5 R ON Port 5 S ON
0	65	Port 1 as the Source and Port 9 as the Receiver Port. Port 5 and 13 terminated with a 50 Ω switch load.	Port 9 R ON
0	20	Port 1 as the Receiver and Port 9 as the Source. Port 5 and 13 terminated with a 50 Ω switch load.	Port 9 S ON
0	68	Port 9 as the Receiver and Source. Port 1, 5 and 13 terminated with a 50 Ω switch load.	Port 9 R ON Port 9 S ON
0	24	Port 13 as the Source and Port 1 as the Receiver. Port 5 and 9 terminated with a 50 Ω switch load.	Port 13 S ON
0	129	Port 1 as the Source and Port 13 as the Receiver. Port 5 and 9 terminated with a 50 Ω switch load.	Port 13 R ON
0	68	Port 13 as the Receiver and Source. Port 1, 5 and 9 terminated with a 50 Ω switch load.	Port 13 R ON Port 13 S ON

Table 18 PNA Port 1 and Test Set Ports 6, 10 and 14

Address	Decimal Data	Description							
16	D0 - D3	Controls SW200; Source to PNA Port 2 or Test Set Port 6, 10 and 14.							
16	D4 - D7	Controls SW201; Receiver to PNA Port 2 or Test Set Port 6, 10 and 14.							
Test Set I/O Data Bit		D0	D1	D2	D3	D4	D5	D6	D7
Data Bit Decimal Equivalent		1	2	4	8	16	32	64	128

Table 19 Address and Data for Port 6, 10 and 14

Address	Data	Description	Port LED's
16	17	Selects the Port 2 as the Source and Receiver port. Port 6, 10 and 14 terminated with a 50 Ω switch load.	All Off
16	18	Selects the PNA Port 2 as the Receiver and Port 6 as the Source. Ports 10 and 14 terminated with a 50 Ω switch load.	Port 6 S ON
16	35	Selects the Port 2 as the Source Port. Port 6 as the Receiver. Ports 10 and 14 terminated with a 50 Ω switch load.	Port 6 R ON
16	34	Selects the Port 6 as the Source and Receiver port. Port 2, 10 and 14 terminated with a 50 Ω switch load.	Port 6 R ON Port 6 S ON
16	65	Port 2 as the Source and Port 10 as the Receiver Port. Port 6 and 14 terminated with a 50 Ω switch load.	Port 10 R ON
16	20	Port 2 as the Receiver and Port 10 as the Source. Port 6 and 14 terminated with a 50 Ω switch load.	Port 10 S ON
16	68	Port 10 as the Receiver and Source. Port 2, 6 and 14 terminated with a 50 Ω switch load.	Port 10 R ON Port 10 S ON
16	24	Port 10 as the Source and Port 2 as the Receiver. Port 6 and 10 terminated with a 50 Ω switch load.	Port 14 S ON
16	129	Port 2 as the Source and Port 14 as the Receiver. Port 6 and 10 terminated with a 50 Ω switch load.	Port 14 R ON
16	68	Port 14 as the Receiver and Source. Port 2, 6 and 10 terminated with a 50 Ω switch load.	Port 14 R ON Port 14 S ON

Table 20 PNA Port 1 and Test Set Ports 7, 11 and 15

Address	Decimal Data	Description							
32	D0 - D3	Controls SW300; Source to PNA Port 3 or Test Set Port 7, 11 and 15.							
32	D4 - D7	Controls SW301; Receiver to PNA Port 3 or Test Set Port 7, 11 and 15.							
Test Set I/O Data Bits		D0	D1	D2	D3	D4	D5	D6	D7
Data Bit Decimal Equivalent		1	2	4	8	16	32	64	128

Table 21 Address and Data for Port 7, 11 and 15

Address	Data	Description	Port LED's
32	17	Selects the Port 3 as the Source and Receiver port. Port 7, 11 and 15 terminated with a 50 Ω switch load.	All Off
32	18	Selects the PNA Port 3 as the Receiver and Port 7 as the Source. Ports 11 and 15 terminated with a 50 Ω switch load.	Port 7 S ON
32	35	Selects the Port 3 as the Source Port. Port 7 as the Receiver. Ports 11 and 15 terminated with a 50 Ω switch load.	Port 7 R ON
32	34	Selects the Port 7 as the Source and Receiver port. Port 3, 11 and 15 terminated with a 50 Ω switch load.	Port 7 R ON Port 7 S ON
32	65	Port 3 as the Source and Port 11 as the Receiver Port. Port 7 and 15 terminated with a 50 Ω switch load.	Port 11 R ON
32	20	Port 3 as the Receiver and Port 11 as the Source. Port 7 and 15 terminated with a 50 Ω switch load.	Port 11 S ON
32	68	Port 11 as the Receiver and Source. Port 3, 7 and 15 terminated with a 50 Ω switch load.	Port 11 R ON Port 11 S ON
32	24	Port 15 as the Source and Port 3 as the Receiver. Port 7 and 11 terminated with a 50 Ω switch load.	Port 15 S ON
32	129	Port 3 as the Source and Port 15 as the Receiver. Port 7 and 11 terminated with a 50 Ω switch load.	Port 15 R ON
32	68	Port 15 as the Receiver and Source. Port 3, 7 and 11 terminated with a 50 Ω switch load.	Port 15 R ON Port 15 S ON

Table 22 PNA Port 1 and Test Set Ports 8, 12 and 16

Address	Decimal Data	Description							
64	D0 - D3	Controls SW400; Source to PNA Port 4 or Test Set Port 8 12 and 16.							
64	D4 - D7	Controls SW401; Receiver to PNA Port 4 or Test Set Port 8 12 and 16.							
Test Set I/O Data Bits		D0	D1	D2	D3	D4	D5	D6	D7
Data Bit Decimal Equivalent		1	2	4	8	16	32	64	128

Table 23 Address and Data for Port 8, 12 and 16

Address	Data	Description	Port LED's
64	17	Selects the Port 4 as the Source and Receiver port. Port 8, 12 and 16 terminated with a 50 Ω switch load.	All Off
64	18	Selects the PNA Port 4 as the Receiver and Port 8 as the Source. Ports 12 and 16 terminated with a 50 Ω switch load.	Port 8 S ON
64	35	Selects the Port 4 as the Source Port. Port 5 as the Receiver. Ports 12 and 16 terminated with a 50 Ω switch load.	Port 8 R ON
64	34	Selects the Port 8 as the Source and Receiver port. Port 4, 12 and 16 terminated with a 50 Ω switch load.	Port 8 R ON Port 8 S ON
64	65	Port 4 as the Source and Port 12 as the Receiver Port. Port 8 and 16 terminated with a 50 Ω switch load.	Port 12 R ON
64	20	Port 4 as the Receiver and Port 12 as the Source. Port 8 and 16 terminated with a 50 Ω switch load.	Port 12 S ON
64	68	Port 12 as the Receiver and Source. Port 4, 8 and 16 terminated with a 50 Ω switch load.	Port 12 R ON Port 12 S ON
64	24	Port 16 as the Source and Port 4 as the Receiver. Port 8 and 12 terminated with a 50 Ω switch load.	Port 16 S ON
64	129	Port 4 as the Source and Port 16 as the Receiver. Port 8 and 12 terminated with a 50 Ω switch load.	Port 16 R ON
64	68	Port 16 as the Receiver and Source. Port 4, 8 and 12 terminated with a 50 Ω switch load.	Port 16 R ON Port 16 S ON

Operational Check

This operational check is to confirm the U3042AE12 and PNA operational performance. The operation verification limits provided ensure that your U3042AE12 and PNA are operating properly. Refer to [“Troubleshooting Operational Check Failures” on page 80](#) to ensure the RF interface cables are installed and working correctly before returning the test set for repairs.

Verification Limits

Specifications for the U3042AE12 Multiport Test Set are typical. System performance for the PNA and Test Set are only characteristic and intended as non warranted information. Only a functional certificate is provided for the U3042AE12.

It is recommended that you return your instrument to Agilent Technologies for servicing or repair if the Test Set and PNA performance exceed the operational verification limits.

Table 24 N5230A/C Operation Verification Limit for Reflection Tracking¹

Frequency	Standard Port 1-16 ²	Option 001 or 002 Port 1-16
10 MHz to 4 GHz	-10.0 dB	0 dB
4 GHz to 6 GHz	-13.0 dB	-2.5 dB
6 GHz to 10 GHz	-16.0 dB	-5.0 dB
10 GHz to 15 GHz	-17.0 dB	-7.5 dB
15 GHz to 20 GHz	-25.0 dB	-15.0 dB

1. Reflection Tracking takes into account Source Loss, Receiver Loss, Margin, and PNA Mixer Cal.
2. A standard unit is one without Options 001 or 002.

Table 25 N5242A Operation Verification Limit for Reflection Tracking¹

Frequency	Standard ² Port 1-16	Options 001 or 002 Port 1-16
10 MHz to 4 GHz	-10.0 dB	0 dB
4 GHz to 6 GHz	-13.0 dB	-2.5 dB
6 GHz to 10 GHz	-16.0 dB	-5.0 dB
10 GHz to 15 GHz	-17.0 dB	-7.5 dB
15 GHz to 20 GHz	-25.0 dB	-15.0 dB
20 GHz to 26.5 GHz	-30.0 dB	-40 dB

1. Reflection Tracking takes into account Source Loss, Receiver Loss, Margin, and PNA Mixer Cal.
2. A standard unit is one without Options 001, 002.

NOTE If you suspect that your 16-Port configuration is not operating properly, ensure that all front RF jumper interconnect cables are correctly attached.

Equipment Required

The Agilent U3042AE12 requires that the user be familiar with the equipment and components listed in [Table 26](#).

This section provides an equipment list and setup of the PNA and Test Set.

Table 26 Equipment List

Description	Qty
N4691A 3.5 mm ECal Module 10 MHz - 26.5 GHz (Option 00F or M0F) <i>or</i> N4691B 3.5 mm ECal Module 300 kHz - 26.5 GHz (Option 00F or M0F) <i>or</i> Mechanical cal kit 85052B or 85052D	1
N5230A/C 4-Port Network Analyzer (Option 245 and 551) <i>or</i> N5242A Option 400 and 551	1
Set of interconnect cables (PNA and Test Set), see “ N5230A/C RF Interface Cable Connections ” on page 16.	1

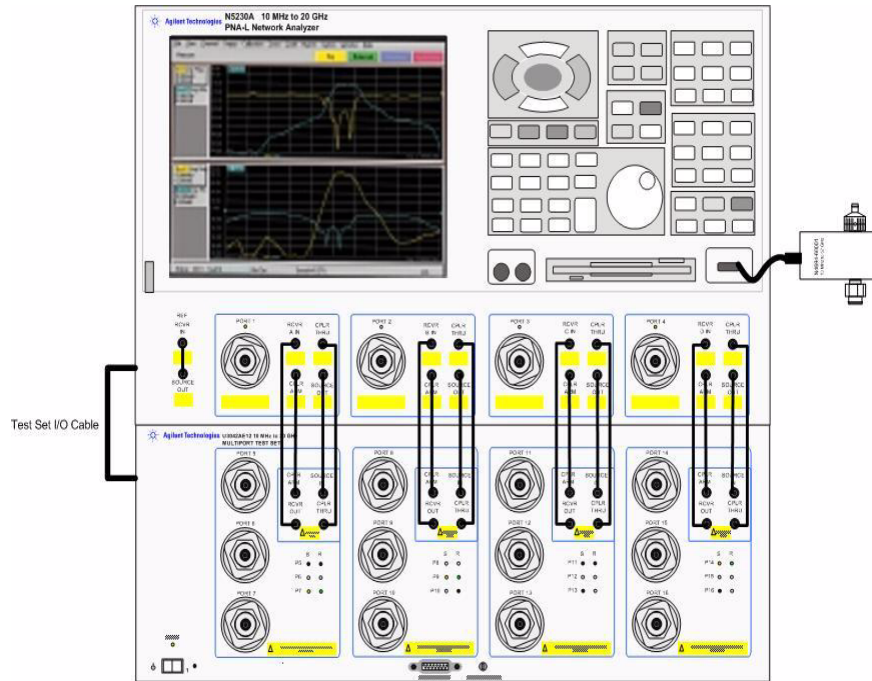
Operational Check Procedure

The sequence of this procedure is very important and must be followed or the performance accuracy and results may vary from the reference plots provided. Ensure that the test set is not connected to the PNA if you are performing a PNA Operator's Check. The PNA will indicate false failures if the test set is connected.

Preparing the N5230A

1. Connect the Test Set to the N5230A 4-Port PNA using the interconnect cables as shown in [Figure 50 on page 69](#) and [Table 10 on page 16](#).
2. Turn On the Test Set.
3. On the PNA, press **Calibration > Cal Sets**. Delete or Rename any Cal Sets titled "999.1" thru "999.16" (16-Port), although it is unlikely that you will find Cal Sets with these names.
4. Verify that the PNA is in 16-Port mode. Refer to the bottom of [Figure 55 on page 72](#), or select **Trace > New Trace**.
 - a. If only four S-Parameters are listed, press **System > Configure > Multiport Capability**. On the Multiport Restart dialog, select **Restart as multiport PNA with this test set**. Select **U3042AE12** (16-Port).
5. Press **System > Preset**.
6. Verify that the **[Stop Frequency]** is set to the maximum of the PNA and test set.
7. Verify that the **[Start Frequency]** is set to **[10 MHz]**. If not, press **Channel > Start/Stop** and enter **[10 MHz]**.
8. Verify that the **[Power]** is to set to **[-8 dBm]**. If not, press **[Power] > Power Level** and enter **[-8 dBm]**.
9. Select **Sweep > IF Bandwidth > 100 Hz**.
10. Select **Sweep > Number of Points > 401**.
11. Connect the ECal module to the PNA-L USB port on the front or rear panel, refer to [Figure 50 on page 69](#). This procedure assumes you are using a ECal. If you are not, see "N5230A 1-Port Calibration and Verification Procedure", [step 2](#).

Figure 50 Test Set to N5230A Connections

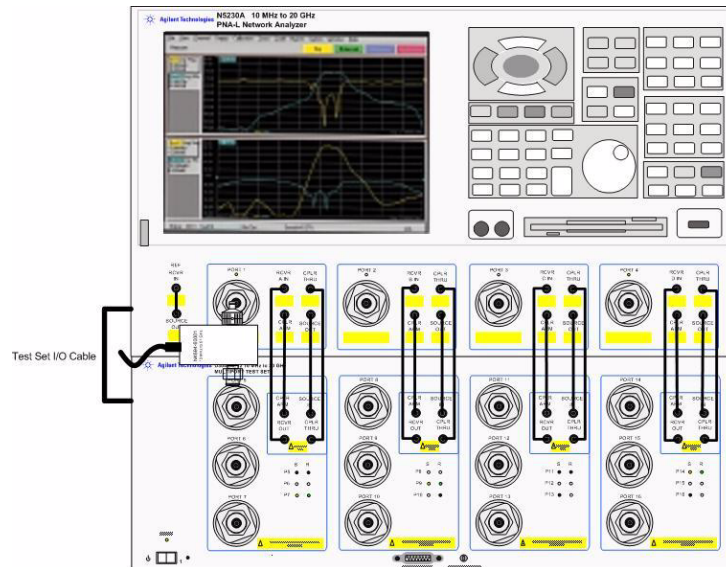


12. Allow the ECal module, Test Set and PNA to warm up for a minimum of 30 minutes.

N5230A 1-Port Calibration and Verification Procedure

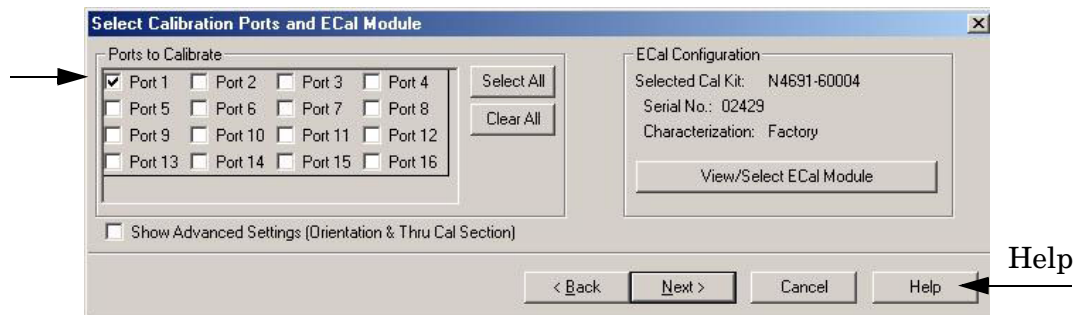
1. Connect the ECal or the mechanical cal kit to Port 1 or the port you are testing. Torque to 8 in-lb. For more information press the **Help** button, see [Figure 51](#).

Figure 51 ECal at N5230A Port 1



2. Perform a 1-Port Calibration on Port 1. On the PNA, press **Calibration > Calibration Wizard**.
 - a. If using a mechanical cal kit, select **SmartCal**.
 - b. If using an ECal module, select **ECal**.
3. Continue following the Cal Wizard prompts. In the “Select Calibration Ports and ECal Module” window, press **Clear All** and select **Port 1**, then press **Next**. See [Figure 52](#).

Figure 52 1-Port Calibration

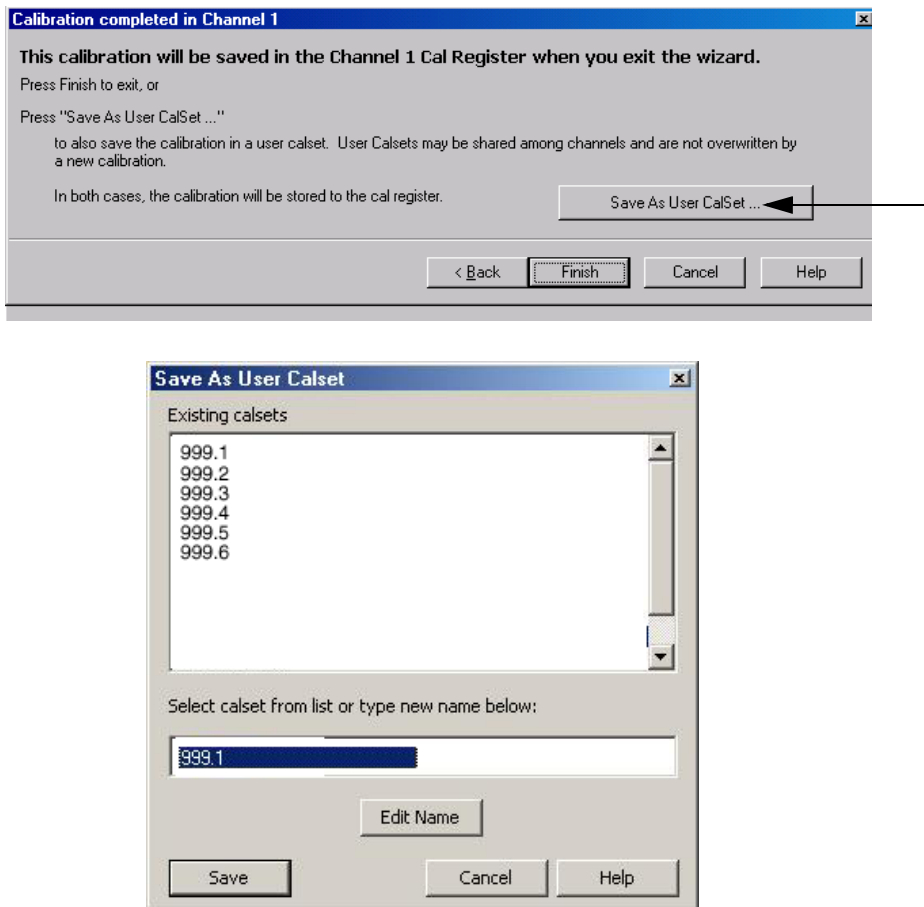


4. Continue to follow the prompts until the “Calibration Completed” window appears.

- At the Calibration Completed prompt, select **Save As User Calset** and type the name **999.1**. Overwrite the Calset if it already exists. Press **Save**.

NOTE If you do not have a key board, select **Save As User Calset > Edit Name** and save as **999.x**. X is the port number you are calibrating. See [Figure 53](#). Use the numeric keypad on the PNA front panel to enter "999.1."

Figure 53 Calibration Complete



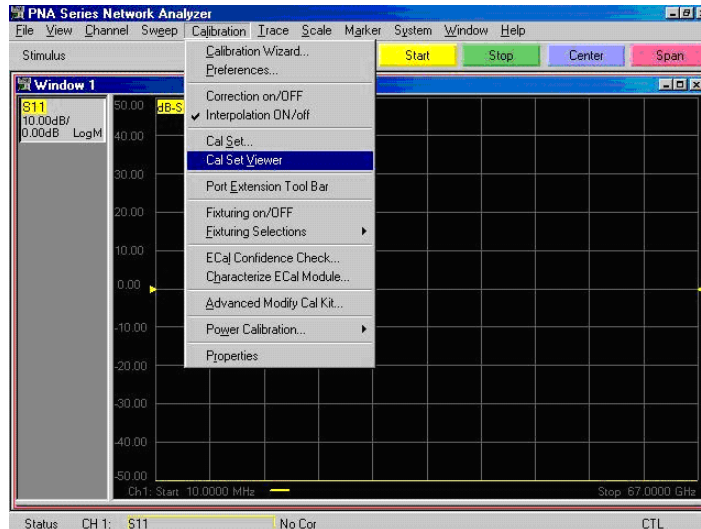
- Repeat [step 1](#) thru [step 5](#) (1-Port Calibration Procedure) for Ports 2 thru 16. When finished, there should be sixteen Cal Sets saved with the titles "999.1" thru "999.16" (16-Port).

If you are using an ECal module you can verify the individual port calibration by selecting **Calibration > ECal Confidence Check**. For further information refer to the system **Help** menu.

- Press **Trace > Delete Trace**. There should be no traces on the PNA screen.

8. Select **Calibration > Cal Set Viewer** to launch the Cal Set Viewer toolbar. See [Figure 54](#).

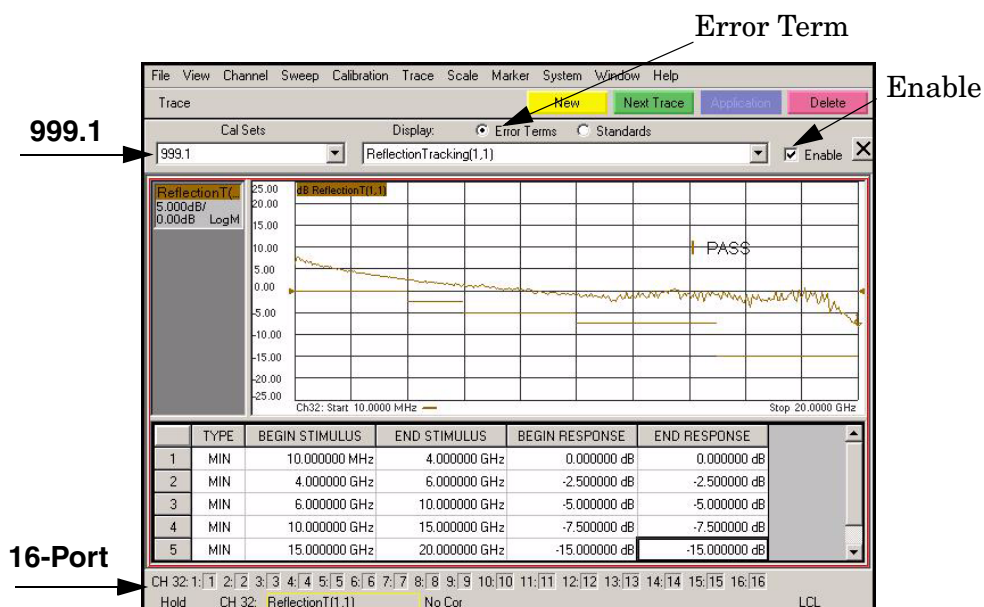
Figure 54 Calibration, Cal Set Viewer



9. From the Cal Sets drop-down menu, select **999.1** and check **Enable**. Select the **Reflection Tracking(1,1)** term in the center drop-down menu and ensure that the **Enable** and **Error Terms** are selected as shown in [Figure 55](#).

NOTE You may also create a table on the PNA and enter the limit line stimulus and response values. Select **Limit Test ON** and **Limit Line ON**, and press **Show Table**. See [Figure 55](#) on page 72.

Figure 55 Option 001 or 002 Reflection Tracking Trace (Port 1-16) with N5230A/C



10. Compare the Reflection Tracking (1,1) trace to the appropriate limits in [Table 24 on page 66](#). This can be done using Limit Lines (press **Trace > Limit Test**) or **Marker**. The trace should be above the limit. PASS will be displayed on the screen if the limit lines are used.

11. Repeat [step 9](#) and [step 10](#) for Cal Sets “999.1” thru “999.16” (16-Port).

Figure 56 Option 001 or 002 Reflection Tracking Trace (Port 1-16) with N5230A/C

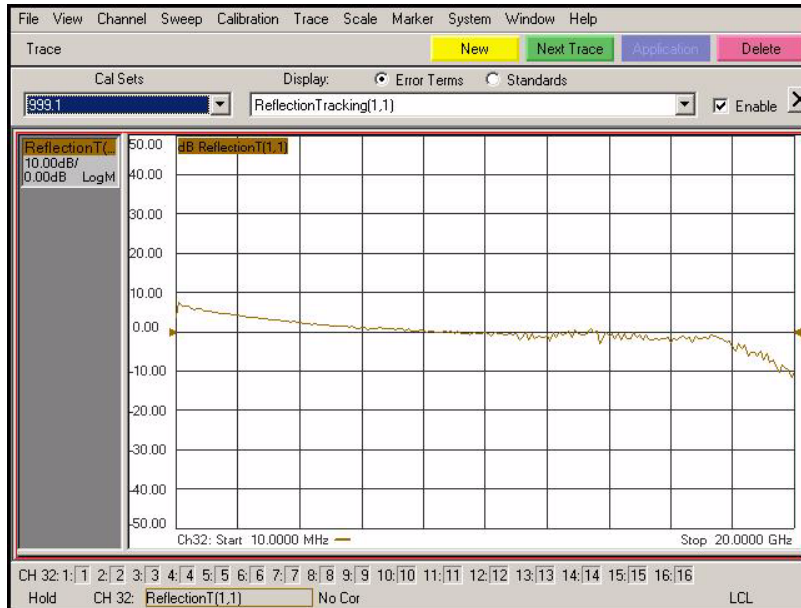
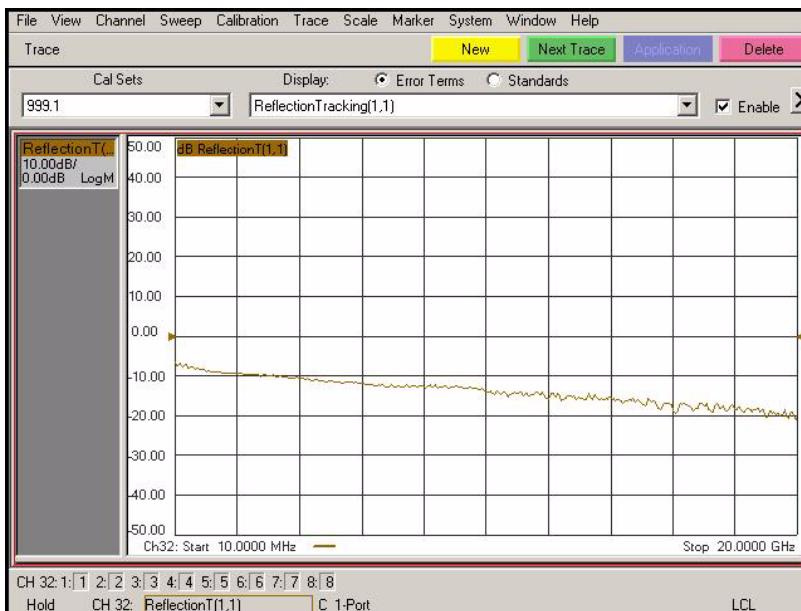


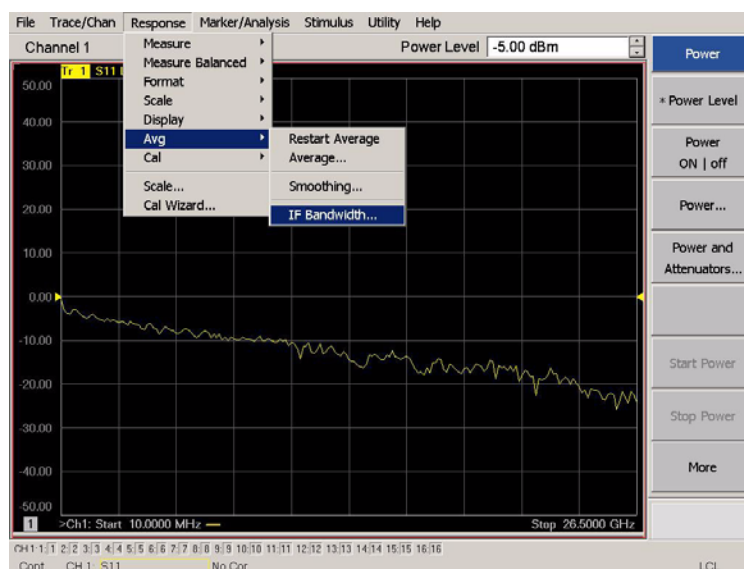
Figure 57 Standard Reflection Tracking Trace (Port 1-16) with N5230A/C



Preparing the N5242A or N5230C

1. Connect the Test Set to the N5242A 4-Port PNA-X using the interconnect cables as shown in [Figure 29 on page 39](#) and [Table 11 on page 38](#). If you are using a N5230C, refer to [Figure 50 on page 69](#) and [Table 10 on page 16](#).
2. Turn On the Test Set.
3. On the PNA, press **Response > CAL > Manage CALS > CAL Set**. Delete or Rename any Cal Sets titled “999.1” thru “999.16” (16-Port), although it is unlikely that you will find Cal Sets with these names.
4. Verify that the PNA is in 16-Port. See the bottom of the measurement window.
 - a. If only four S-Parameters are listed, press **Utility > System > Configure > Multiport Capability**. On the Multiport Restart dialog, select **Restart as multiport PNA with this test set**. Select **U3042AE12 (16-Port)**.
5. Press **Preset**.
6. Verify that the **[Stop Frequency]** is set to **[26.5 GHz]**, or **[20 GHz]** for the N5230C.
7. Verify that the **[Start Frequency]** is set to **[10 MHz]**.
8. Verify that the **[Power]** is set to **[-5 dBm]**.
9. Select **Response > Avg > IF Bandwidth > 100 Hz**. See [Figure 58](#).
10. Select **Stimulus > Sweep > Number of Points > 401**.
11. Connect the ECal module to the PNA USB port on the front or rear panel, refer to [Figure 50 on page 69](#). This procedure assumes you are using a ECal. If you are not, see “N5242A or N5230C 1-Port Calibration and Verification Procedure” [step 2](#).
12. Allow the ECal module, Test Set and PNA to warm up for a minimum of 30 minutes.

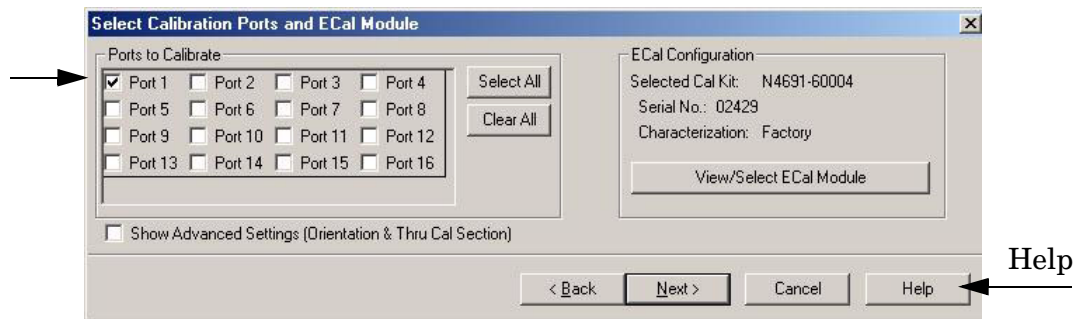
Figure 58 Setting the IF Bandwidth



N5242A or N5230C 1-Port Calibration and Verification Procedure

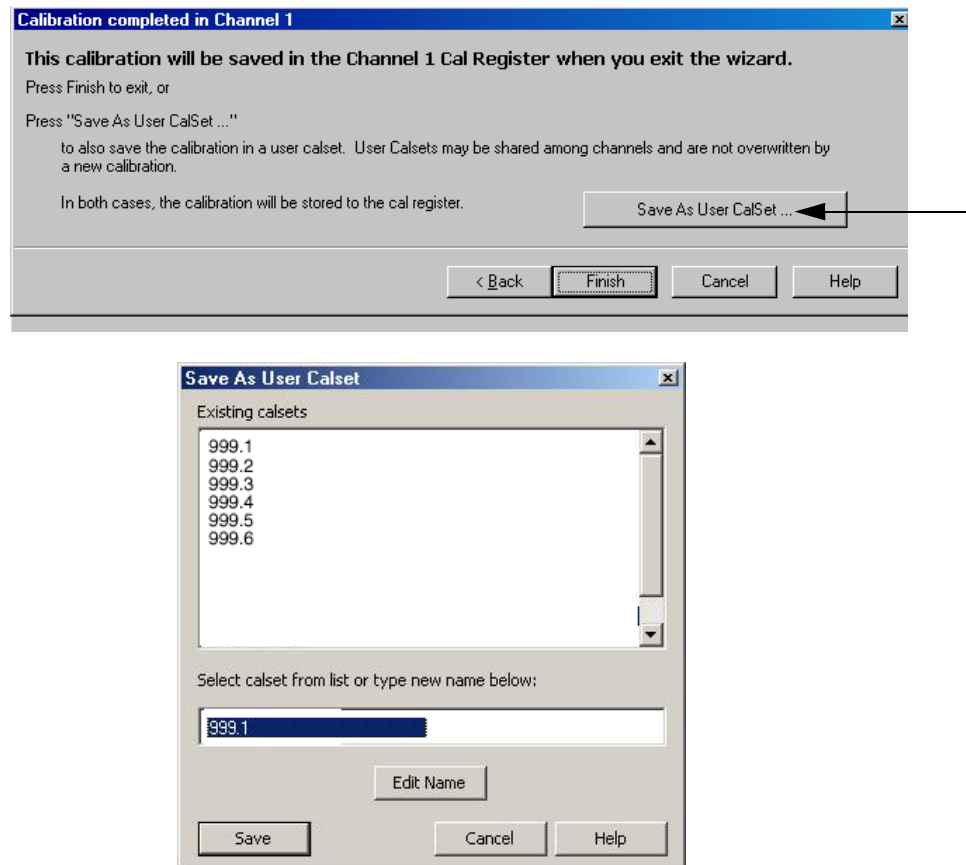
1. Connect the ECal or the mechanical cal kit to Port 1 or the port you are testing. Refer to [Figure 2 on page 2](#). Torque to 8 in-lb. For more information press the **Help** button, see [Figure 59](#).
2. Perform a 1-Port Calibration on Port 1. On the PNA, press **Response > CAL > Start Cal > Calibration Wizard**.
 - a. If using a mechanical cal kit, select **SmartCal**.
 - b. If using an ECal module, select **ECal**.
3. Continue following the Cal Wizard prompts. In the “Select Calibration Ports and ECal Module” window, press **Clear All** and select **Port 1**, then press **Next**.

Figure 59 1-Port Calibration



4. Continue to follow the prompts until the “Calibration Completed” window appears.
5. At the Calibration Completed prompt, select **Save As User Calset** and type the name **999.1**. Overwrite the Calset if it already exists. Press **Save**.

NOTE If you do not have a key board, select **Save As User Calset > Edit Name** and save as **999.x**. X is the port number you are calibrating. Refer to [Figure 53 on page 71](#). Use the numeric keypad on the PNA front panel to enter "999.1."

Figure 60 Calibration Complete

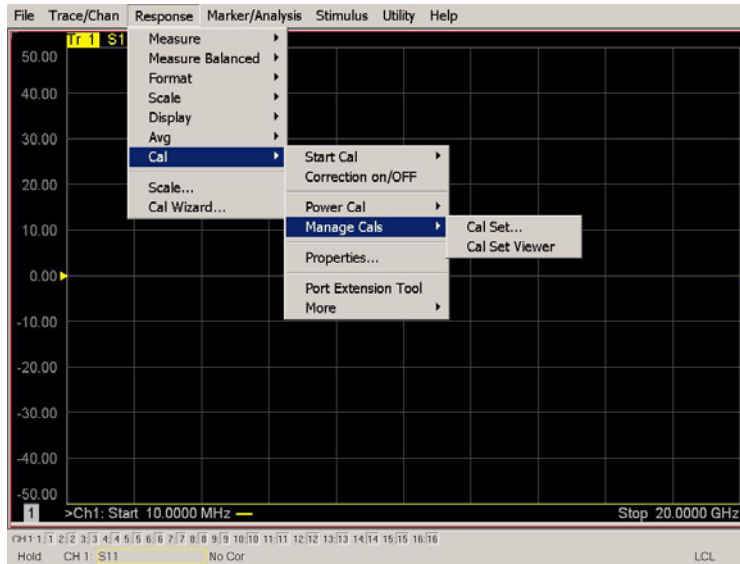
6. Repeat [step 1](#) thru [step 5](#) (1-Port Calibration Procedure) for Ports 2 thru 16. When finished, there should be sixteen Cal Sets saved with the titles “999.1” thru “999.16” (16-Port).

If you are using an ECal module you can verify the individual port calibration by selecting **Response > CAL > More > ECAL > ECAL Confidence Check**. For further information refer to the system **Help** menu.

7. Press **Trace/Chan > Trace > Delete Trace**. There should be no traces on the PNA screen.

- To launch the Cal Set Viewer toolbar. Select **Response > CAL > Manage CALS > CAL Set Viewer**.

Figure 61 Calibration, Cal Set Viewer



- From the Cal Sets drop-down menu, select **999.1** and check **Enable**. Select the **Reflection Tracking(1,1)** term in the center drop-down menu and ensure that the **Enable** and **Error Terms** are selected.

NOTE You may also create a table on the PNA and enter the limit line stimulus and response values. Select Limit Test ON and Limit Line ON, and press Show Table. See [Figure 62](#).

Figure 62 PNA-X Setting the Test Limits

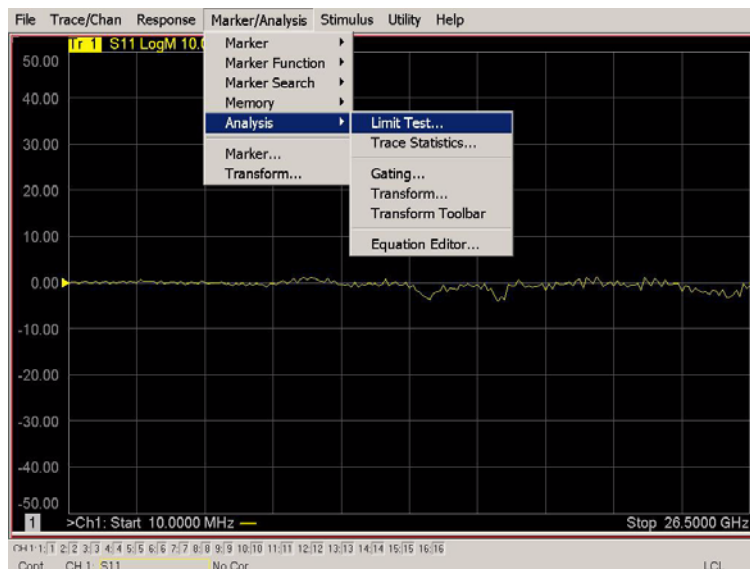
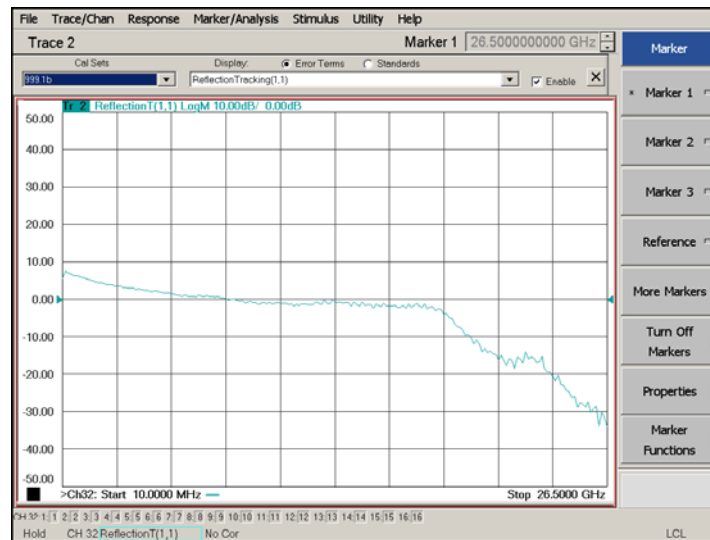
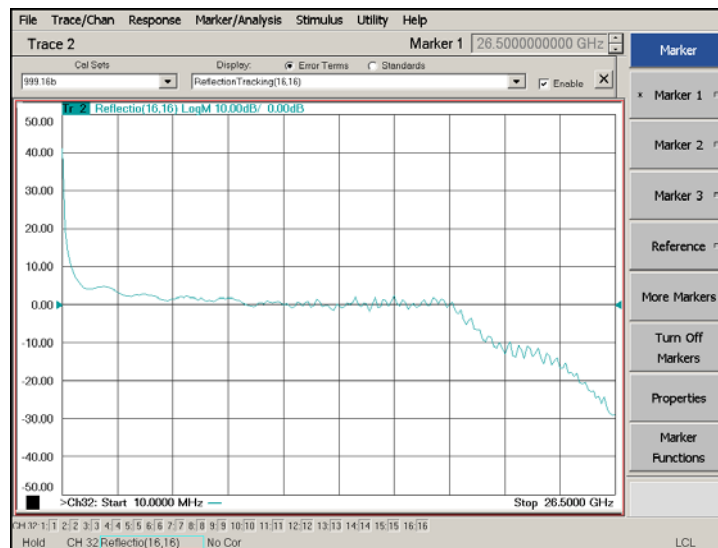


Figure 63 Option 001 or 002 Reflection Tracking Trace (Port 1-4) with N5242A

10. Compare the Reflection Tracking (1,1) trace to the appropriate limits in [Table 24 on page 66](#). This can be done using Limit Lines (press **Marker/Analysis** > **Analysis** > **Limit Test**). The trace should be above the limit. PASS will be displayed on the screen if the limit lines are used. If you are using an N5230C, refer to [Figure 55 on page 72](#), [Figure 56](#) and [Figure 57 on page 73](#).

11. Repeat [step 9](#) and [step 10](#) for Cal Sets “999.1” thru “999.16” (16-Port).

Figure 64 Option 001 or 002 Reflection Tracking Trace (Port 5-16) with N5242A

NOTE Response from 10 MHz to 500 MHz is normal due to the PNA-X Couplers in comparison to the U3042AE12 bridges. The bridges have more gain in the coupled RF path.

Figure 65 Standard Reflection Tracking Trace (Port 1-4) with N5242A

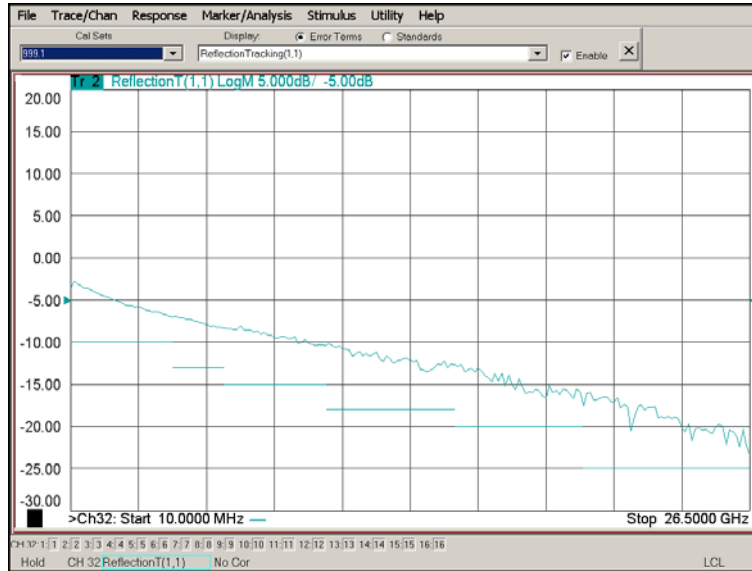
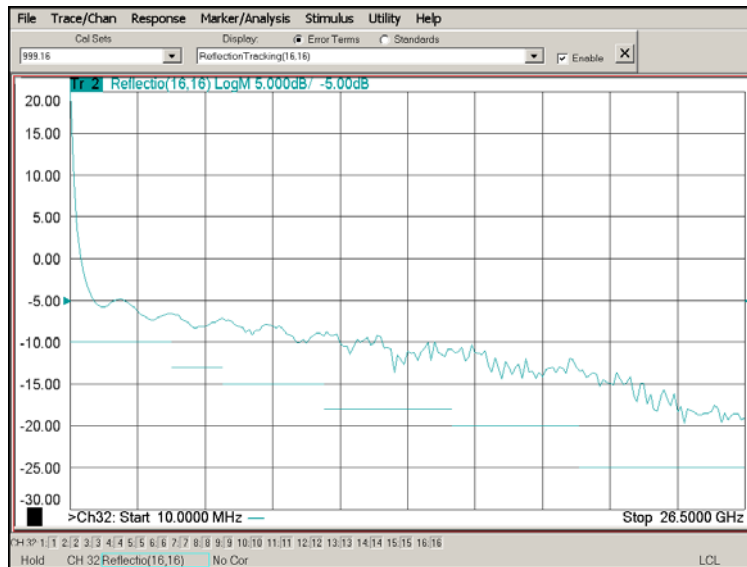


Figure 66 Standard Reflection Tracking Trace (Port 5-16) with N5242A



NOTE Response from 10 MHz to 500 MHz is normal due to the PNA-X couplers in comparison to the U3042AE12 bridges. The bridges have more gain in the coupled RF path.

Troubleshooting Operational Check Failures

If your test results fail the Operational Check limits, verify following:

1. Insure that the test set is turned on and connected properly to the PNA.
2. Check all appropriate network analyzer and test set connectors for damage, cleanliness, and proper torque.
3. Repeat the relevant 1-Port calibrations.
4. Verify that the stand-alone network analyzer is operating properly and meeting its published specifications.

Interconnect Cable Verification

1. Connect the Test Set to the PNA and select Multiport mode.
2. Verify the Source Interconnect RF cables (Source Out and CPLR THRU).
 - a. Remove the Receiver and CPLR ARM interconnect cables and install the standard PNA jumpers.
 - b. Connect two RF cables on the PNA, Port-1 to Port-2 and Port-3 to Port-4.
 - c. Set the PNA to measure Trace S12, S21, S34 and S43, and verify that there are no power holes. If S12, or S34 has a power hole check the Port-2, or Port-4 Source interconnect cables and test set connectors for damage. If S21, or S43 has a power hole check the Port-1, or Port-3 Source interconnect cables and test set connectors for damage.
3. Verify the Receiver Interconnect RF cables (Receiver A IN or B IN and CPLR ARM).
 - a. Re-install the Receiver and CPLR ARM interconnect cables.
 - b. Remove the Source Out and CPLR THRU interconnect cables and install the standard PNA jumpers.
 - c. Set the PNA to measure Trace S12, S21, S34 and S43. Verify that there are no power holes. If S12 or S34 has a power hole check Port-1, or Port-3 Receiver Interconnect cables and test set connectors for damage. If S21, or S43 has a power hole check Port-2, or Port-4 Receiver Interconnect cables and test set connectors for damage.
4. If the problem still exists, connect the standard jumpers to the PNA (Source and Receiver) and verify the Source Out to CPLR THRU and A/B IN to CPLR ARM switch paths.
 - a. Connect two RF cable, one to Port-1 and one to Port-2.
 - b. Set the PNA to measure trace S12 (all standard jumpers connected).
 - c. Connect the Port-1 cable to Source Out and Port-2 cable to CPLR THRU connectors on the test set. If a power hole still exists refer to [“Contacting Agilent” on page 94](#).
 - d. Connect Port-1 to Receiver A IN or B IN and Port-2 to CPLR ARM connectors on the test set. If a power hole still exists refer to [“Contacting Agilent”](#).

Service Information

Refer to [“Contacting Agilent”](#) on page 94.

WARNING **No operator serviceable parts inside. Refer servicing to qualified personnel. To prevent electrical shock do not remove covers.**

WARNING **These servicing instructions are for use by qualified personnel only. To avoid electrical shock, do not perform any servicing unless you are qualified to do so.**

Replaceable Parts

Special options are built to order, so long lead times may be encountered when ordering replacement parts..

Description	Agilent Part Number
Test set I/O Cable	8120-6818
RF Cable, Semi-rigid	Z5623-20418
RF Cable, Semi-rigid	Z5623-20419
Port 1 SOURCE OUT	U3042-20031
Port 1 CPLR THRU	U3042-20032
Port 1 CPLR ARM	U3042-20029
Port 1 RCVR A IN	U3042-20030
Port 3 SOURCE OUT	U3042-20035
Port 3 CPLR ARM	U3042-20033
Port 3 RCVR C IN	U3042-20034
Port 3 CPLR THRU	U3042-20036
Port 4 CPLR ARM	U3042-20037
Port 4 RCVR D IN	U3042-20038
Port 4 SOURCE OUT	U3042-20039
Port 4 CPLR THRU	U3042-20040
Port 2 CPLR ARM	U3042-20041
Port 2 SOURCE OUT	U3042-20043
Port 2 RCVR B IN	U3042-20042
Port 2 CPLR THRU	U3042-20044
Screw	0515-2317
PNA-X Test Set Rear Lock Feet (right)	N5242-20138
PNA-X Test Set Rear Lock Feet (left)	N5242-20139

Description	Agilent Part Number
PNA-L or PNA-X Locking Feet	5023-0132
PNA-L Test Set Locking Feet	5063-9253
User's Guide (Option E12)	U3042-90001

Theory of Operation

The following is a description of the operation of the U3042AE12. Reference the U3042AE12 block diagrams shown in [Figure 67 on page 85](#). This section assumes the user has a general understanding of couplers, switches, and network analyzers.

RF Switch Components

There are eight quad switches. The switches select the RF paths from the PNA source and receiver through interconnect cables to test set port paths 5 thru 16.

S100 - Source to Ports (1, 5, 9 and 13)

Switch 100 provides control of the Source path to PNA Port 1 and ports 5, 9 and 13 to the Test Set. In the state shown in the block diagram, switch 100 routes the RF Source back to the PNA Port 1 and the Test Set Source paths to ports 5, 9 and 13 are terminated.

S200 - Source to Ports (2, 6, 10 and 14)

Switch 200 provides control of the Source path to PNA Port 6 and ports 10 and 14 to the Test Set. In the state shown in the block diagram, switch 200 routes the RF Source back to the PNA Port 2 and all unused Test Set ports (6, 10 and 14) Source paths are terminated.

S300 - Source to Ports (3, 7, 11 and 15)

Switch 300 provides control of the Source path to PNA Port 7 and ports 11 and 15 to the Test Set. In the state shown in the block diagram, switch 300 routes the RF Source back to the PNA Port 3 and all unused test set ports (7, 11 and 15) source paths are terminated.

S400 - Source to Ports (4, 8, 12 and 16)

Switch 400 provides control of the Source path to PNA Port 4 and ports 8, 12 and 16 to the Test Set. In the state shown in the block diagram, switch 400 routes the RF Source back to the PNA Port 4 and all unused test set ports (8, 12 and 16) Source paths are terminated.

S101 - Receiver to Ports (1, 5, 9 and 13)

Switch 101 provides control of the A Receiver path to PNA Port 1 and ports 5, 9 and 13 to the Test Set. In the state shown in the block diagram, switch 101 routes the Coupler Arm from the PNA Port 1 to the A Receiver and all unused test set ports (5, 9 and 13) Coupler Arm paths are terminated.

S201 - Receiver to Ports (2, 6, 10 and 14)

Switch 201 provides control of the A Receiver path to PNA Port 2 and ports 6, 10 and 14 to the Test Set. In the state shown in the block diagram, switch 201 routes the Coupler Arm from the PNA Port 2 to the A Receiver and all unused Test Set ports (6, 10 and 14) Coupler Arm paths are terminated.

S301 - Receiver to Ports (3, 7, 11 and 15)

Switch 301 provides control of the A Receiver path to PNA Port 3 and ports 7, 11 and 15 to the Test Set. In the state shown in the block diagram, switch 301 routes the Coupler Arm from the PNA Port 3 to the A Receiver and all unused Test Set ports (7, 11 and 15) Coupler Arm paths are terminated.

S401 - Receiver to Ports (4, 8, 12 and 16)

Switch 401 provides control of the B Receiver path to PNA Port 4 and ports 8, 12 and 16 to the Test Set. In the state shown in the block diagram, switch 401 routes the Coupler Arm from the PNA Port 4 to the B Receiver and all unused Test Set ports Coupler Arm paths are terminated.

RF Coupler Components

Test set ports (5 - 16) provide the signal separation of the source and receiver paths. The test set ports can either stimulate or receive a signal to the DUT.

System Block Diagram

Figure 67 U3042AE12 Standard Configuration

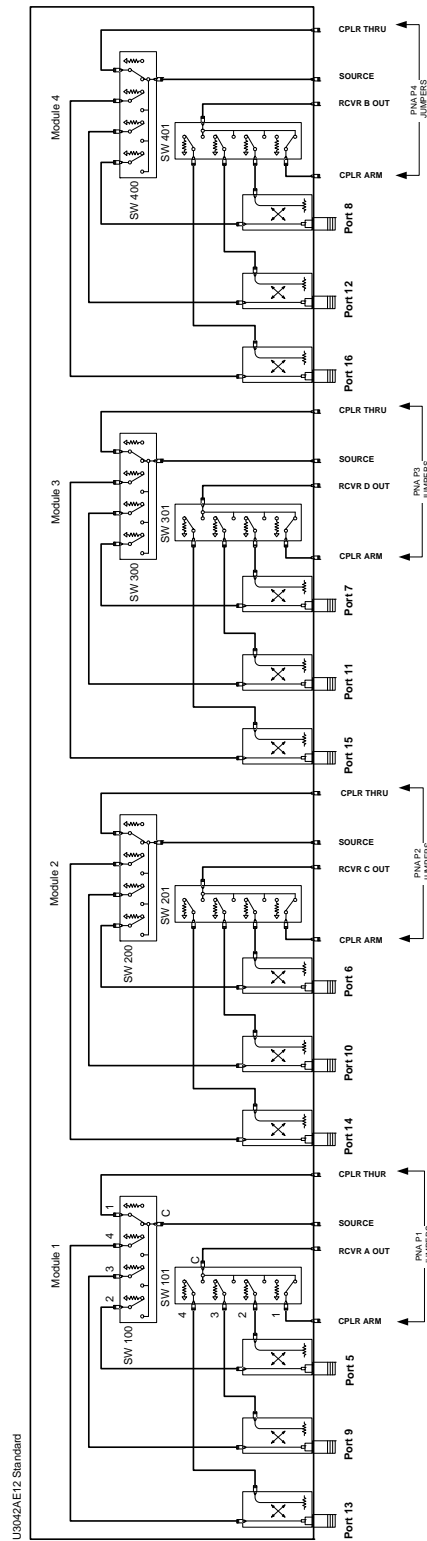


Figure 68 U3042AE12 Option 001 Configuration

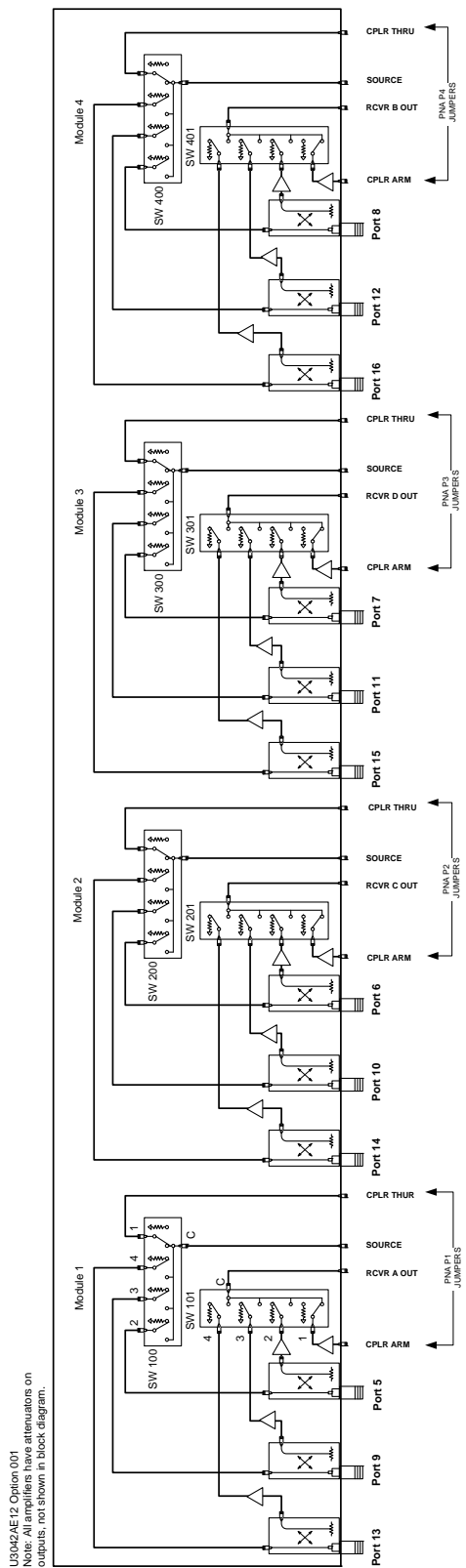
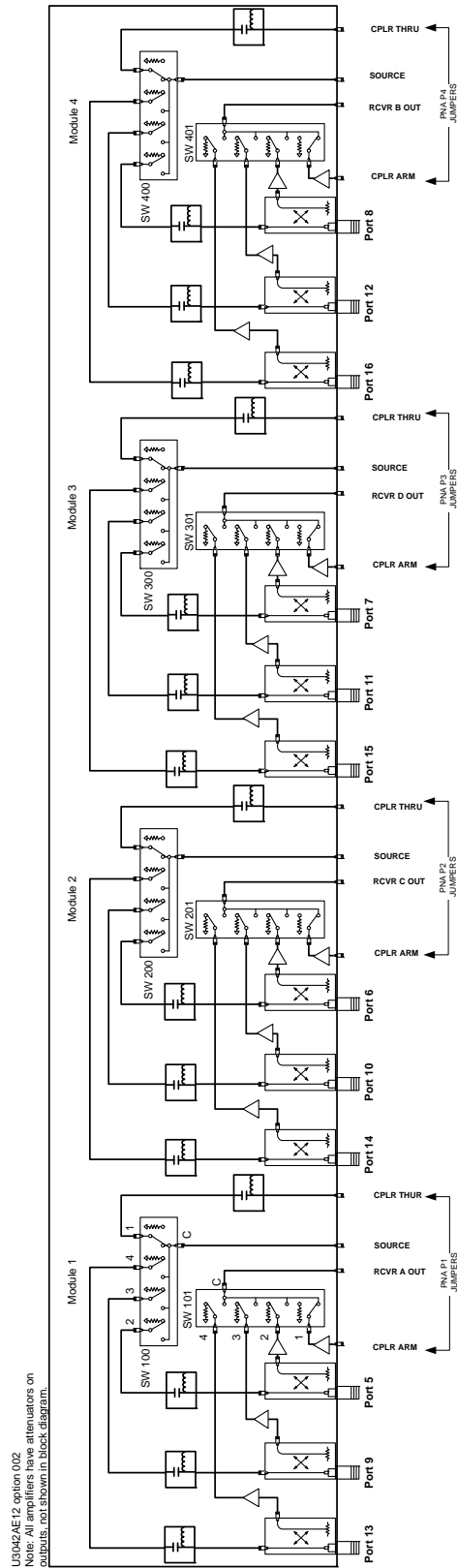


Figure 69 U3042AE12 Option 002 Configuration



Safety and Regulatory Information

Introduction

Review this product and related documentation to familiarize yourself with safety markings and instructions before you operate the instrument. The documentation contains information and warnings that must be followed by the user to ensure safe operation and to maintain the product in a safe condition.

Before Applying Power

Verify that the premises electrical supply is within the range of the instrument. The instrument has an autoranging power supply.

Connector Care and Cleaning

If alcohol is used to clean the connectors, the power cord to the instrument must be removed. All cleaning should take place in a well ventilated area. Allow adequate time for the fumes to disperse and moist alcohol to evaporate prior to energizing the instrument.

WARNING **To prevent electrical shock, disconnect the Agilent Technologies model product from mains before cleaning. Use a dry cloth or one slightly dampened with water to clean the external case parts. Do not attempt to clean internally.**

Declaration of Conformity

A declaration of conformity is on file for the PNA models, and a copy is available upon request, or a copy is available on the Agilent Technologies web site at <http://regulations.corporate.agilent.com/DoC/search.htm>

Shipping Instructions

You must always call the Agilent Technologies Instrument Support Center to initiate service before retuning your instrument to a service office. See [“Contacting Agilent” on page 94](#). Always transport or ship the instrument using the original packaging if possible. If not, comparable packaging must be used. Attach a complete description of the failure symptoms.

Compliance with German Noise Requirements

This is to declare that this instrument is in conformance with the German Regulation on Noise Declaration for Machines (Laermangabe nach der Maschinenlaermrrordnung-3. GSGV Deutschland).

Acoustic Noise Emission/Geraeuschemission	
LpA<70 dB	Lpa<70 dB
Operator Position	am Arbeitsplatz
Normal Operation	normaler Betrieb
per ISO 7779	nach DIN 45635 t. 19

EMC Information

Complies with European EMC Directive 89/336/EEC, amended by 93/68/EEC

- IEC/EN 61326

This product complies with the radiated electromagnetic field immunity requirement in IEC/EN 61326 using performance criterion B. Degradation of some product specifications can occur in the presence of ambient electromagnetic fields. The product self-recovers and operates as specified when the ambient field is removed.

- CISPR Pub 11 Group 1, class A
- AS/NZS CISPR 11:2002
- This ISM device complies with Canadian ICES-001.
Cet appareil ISM est conforme a la norme NMB du Canada.

Safety Information

Complies with European Low Voltage Directive 2006/95/EC

- IEC/EN 61010-1:2001
- Canada: CSA C22.2 No. 61010-4
- USA: UL Std No. 61010-1 (2nd Edition)

Warnings

WARNING The **WARNING** notice denotes a hazard. It calls attention to a procedure, practice, or the like, which if not correctly performed or adhered to, could result in personal injury. Do not proceed beyond a **WARNING** notice until the indicated conditions are fully understood and met.

Warnings applicable to this instrument are:

WARNING To prevent electrical shock, disconnect the [Agilent Technologies U3042AE12](#) from the mains power supply before cleaning. Use a dry cloth or one slightly dampened with water to clean the external case parts. Do not attempt to clean internally.

WARNING For continued protection against fire hazard replace line fuse only with same type and rating: 5A/250V, Part Number 2110-0709
The use of other fuses or material is prohibited.

WARNING This is a Safety Class I product (provided with a protective earthing ground incorporated in the power cord). The mains plug shall be inserted only into a socket outlet provided with a protective earth contact. Any interruption of the protective conductor, inside or outside the instrument, is likely to make the instrument dangerous. Intentional interruption is prohibited.

WARNING No operator serviceable parts inside. Refer servicing to qualified personnel. To prevent electrical shock do not remove covers.

WARNING The opening of covers or removal of parts is likely to expose the user to dangerous voltages. Disconnect the instrument from all voltage sources while it is being opened.

WARNING If this product is not used as specified, the protection provided by the equipment could be impaired. This product must be used in a normal condition (in which all means for protection are intact) only.

WARNING The detachable power cord is the instrument disconnecting device. It disconnects the mains circuits from the mains supply before other parts of the instrument. The front panel switch is only a standby switch and is not a **LINE** switch (disconnecting device).

Cautions

CAUTION The CAUTION notice denotes a hazard. It calls attention to an operating procedure, practice, or the like, which if not correctly performed or adhered to, could result in damage to the product or loss of important data. Do not proceed beyond a CAUTION notice until the indicated conditions are fully understood and met.

Cautions applicable to this instrument are:

CAUTION Always use the three-prong ac power cord supplied with this instrument. Failure to ensure adequate earth grounding (by not using this cord) can cause instrument damage and the risk of electrical shock.

CAUTION This instrument has autoranging line voltage input; be sure the supply voltage is within the specified range.

CAUTION Ventilation Requirements: When installing the instrument in a cabinet, the convection into and out of the instrument must not be restricted. The ambient temperature (outside the cabinet) must be less than the maximum operating temperature of the instrument by 4 °C for every 100 watts dissipated in the cabinet. If the total power dissipated in the cabinet is greater than 800 watts, forced convection must be used.

CAUTION This product is designed for use in Installation Category II and Pollution Degree 2 per IEC 61010-1:2000, and 664 respectively.

Instrument Markings



The instruction documentation symbol. The product is marked with this symbol when it is necessary for the user to refer to the instructions in the documentation.



This symbol indicates that the instrument requires alternating current (ac) input.



This symbol indicates separate collection for electrical and electronic equipment, mandated under EU law as of August 13, 2005. All electric and electronic equipment are required to be separated from normal waste for disposal (Reference WEEE Directive, 2002/96/EC).



This symbol indicates that the power line switch is ON.



This symbol indicates that the power line switch is in the STANDBY position.



This symbol indicates that the power line switch is in the OFF position.



This symbol is used to identify a terminal which is internally connected to the product frame or chassis.



The CE mark is a registered trademark of the European Community. (If accompanied by a year, it is when the design was proven.)



The CSA mark is a registered trademark of the Canadian Standards Association. This instrument complies with Canada: CSA 22.2 No. 61010-4



This is a symbol of an Industrial Scientific and Medical Group 1 Class A product.



This is a marking to indicate product compliance with the Canadian Interference-Causing Equipment Standard (ICES-001).



Direct Current.



This is a required mark signifying compliance with an EMC requirement. The C-Tick mark is a registered trademark of the Australian Spectrum Management Agency.



China RoHS regulations include requirements related to packaging, and require compliance to China standard GB18455-2001.



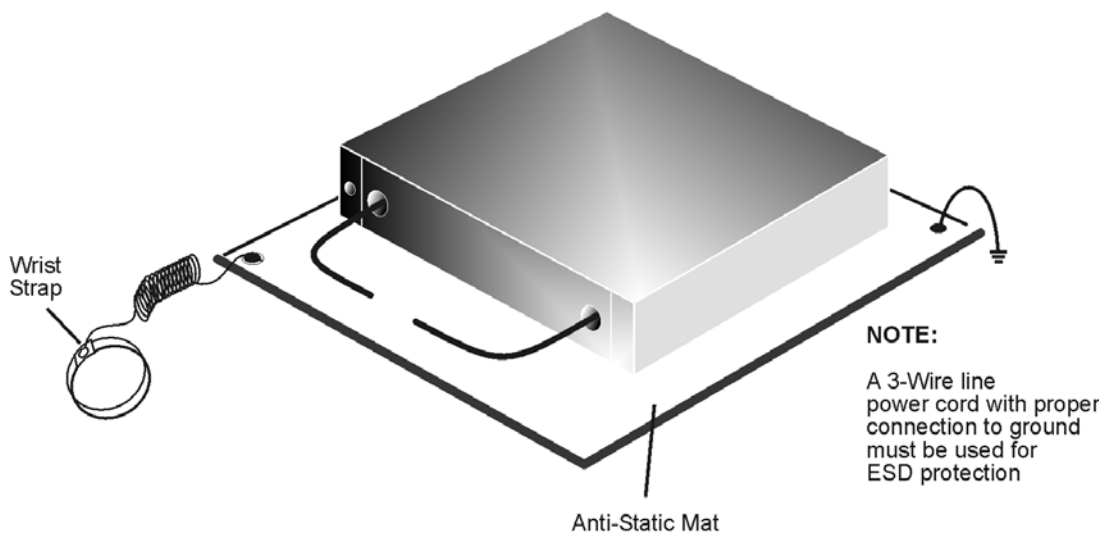
This symbol indicates compliance with the China RoHS regulations for paper/fiberboard packaging.

Electrostatic Discharge Protection

Protection against electrostatic discharge (ESD) is essential while removing assemblies from or connecting cables to the network analyzer. Static electricity can build up on your body and can easily damage sensitive internal circuit elements when discharged. Static discharges too small to be felt can cause permanent damage. To prevent damage to the instrument:

- *always* have a grounded, conductive table mat (9300-0797) in front of your test equipment.
- *always* wear a grounded wrist strap (9300-1367) with grounding cord (9300-0980), connected to a grounded conductive table mat, having a 1 M Ω resistor in series with it, when handling components and assemblies or when making connections.
- *always* wear a heel strap (9300-1126) when working in an area with a conductive floor. If you are uncertain about the conductivity of your floor, wear a heel strap.
- *always* ground yourself before you clean, inspect, or make a connection to a static-sensitive device or test port. You can, for example, grasp the grounded outer shell of the test port or cable connector briefly.
- *always* ground the center conductor of a test cable before making a connection to the analyzer test port or other static-sensitive device. This can be done as follows:
 1. Connect a short (from your calibration kit) to one end of the cable to short the center conductor to the outer conductor.
 2. While wearing a grounded wrist strap, grasp the outer shell of the cable connector.
 3. Connect the other end of the cable to the test port and remove the short from the cable.

Figure 27 ESD Protection Setup



ku310b

Contacting Agilent

Assistance with test and measurement needs, and information on finding a local Agilent office are available on the Internet at:

<http://www.agilent.com/find/assist>

You can also purchase accessories or documentation items on the Internet at:

<http://www.agilent.com/find>

If you do not have access to the Internet, contact your field engineer.

NOTE In any correspondence or telephone conversation, refer to the product by its model number and full serial number. With this information, the Agilent representative can determine the warranty status of your unit.
